

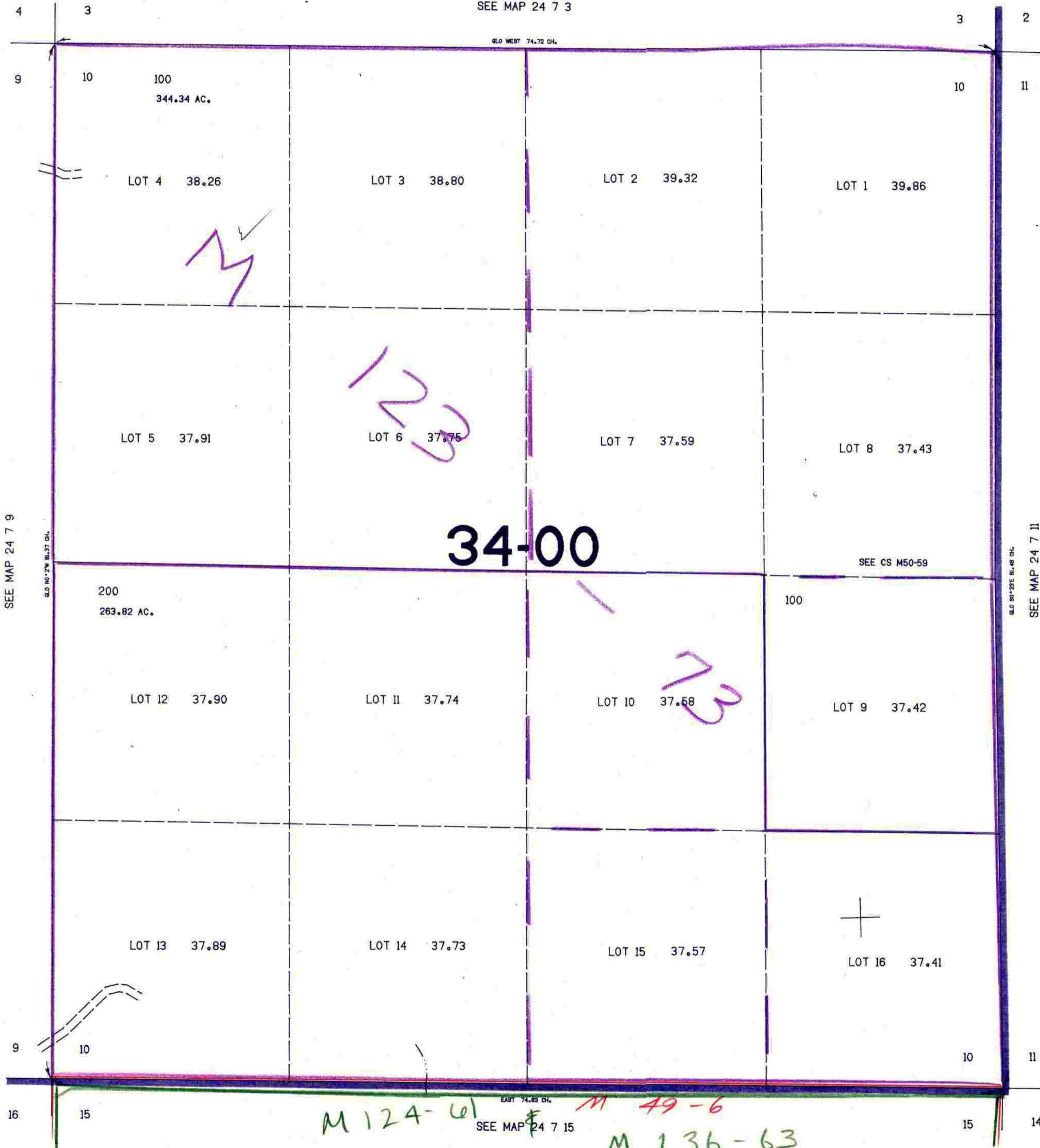
SECTION 10 T.24S. R.7W. W.M.
DOUGLAS COUNTY

24 7 10

THIS MAP WAS PREPARED FOR
ASSESSMENT PURPOSE ONLY.

1"=400'

SEE MAP 24 7 3



34-00

M 124-61 M 49-6 M 136-63

SEE MAP 24 7 15

202,000

24 7 10

680,000