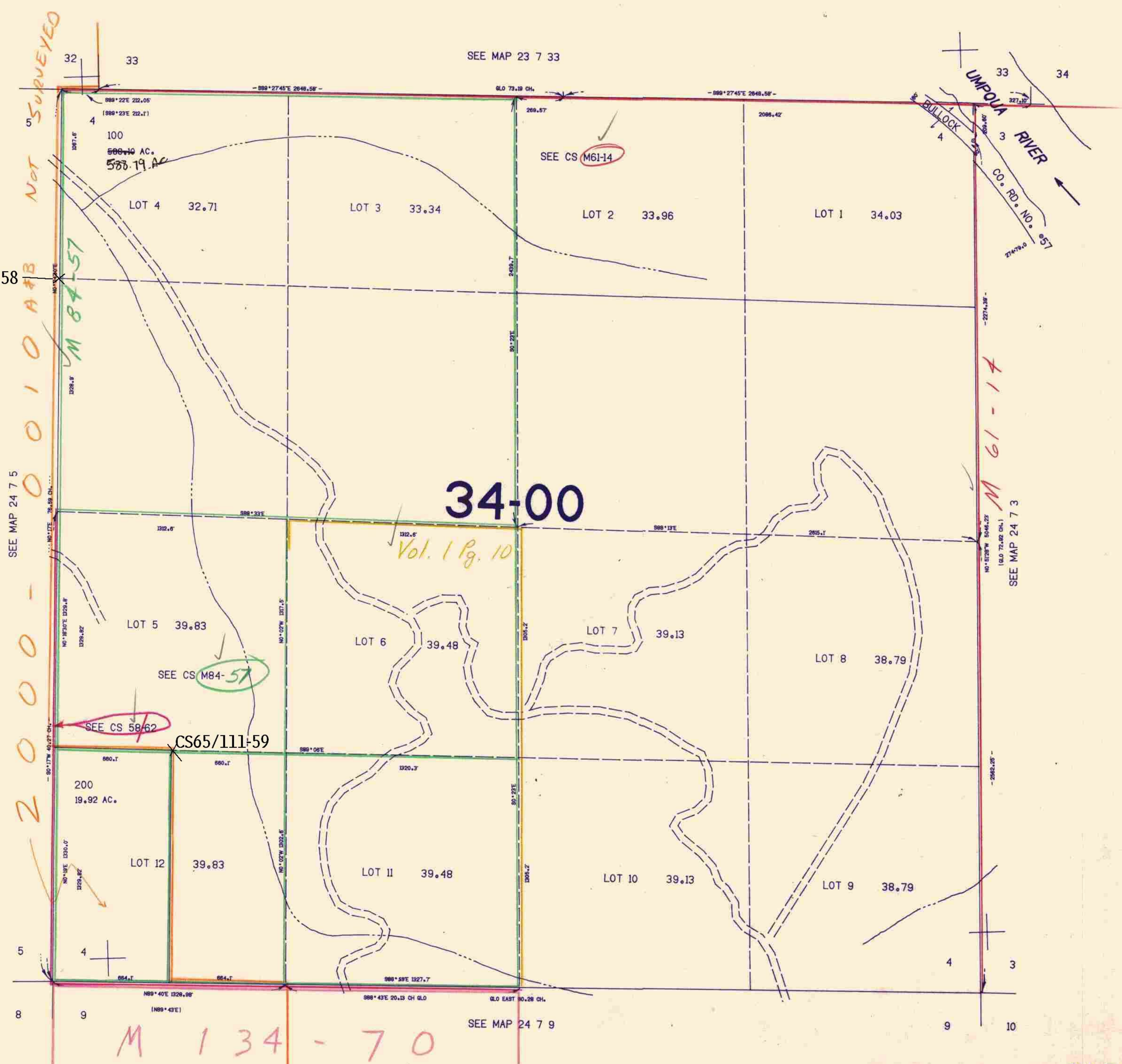


SECTION 4 T.24S. R.7W. W.M.
DOUGLAS COUNTY

24 7 4

THIS MAP WAS PREPARED FOR
ASSESSMENT PURPOSE ONLY.

1"=400'



CS65/111-58

NOT SURVEYED

M 84-57

SEE MAP 24 7 5

20000

CS65/111-59

M 134-70

SEE CS M61-14

SEE CS M84-57

SEE CS 58-62

34-00

Vol. 1 Pg. 10

M 61-14

SEE MAP 24 7 3

685.000

24 7 4

198.000

10/83
BS