

SECTION 2 T.24S. R.7W. W.M.  
DOUGLAS COUNTY

24 7 2  
& INDEX

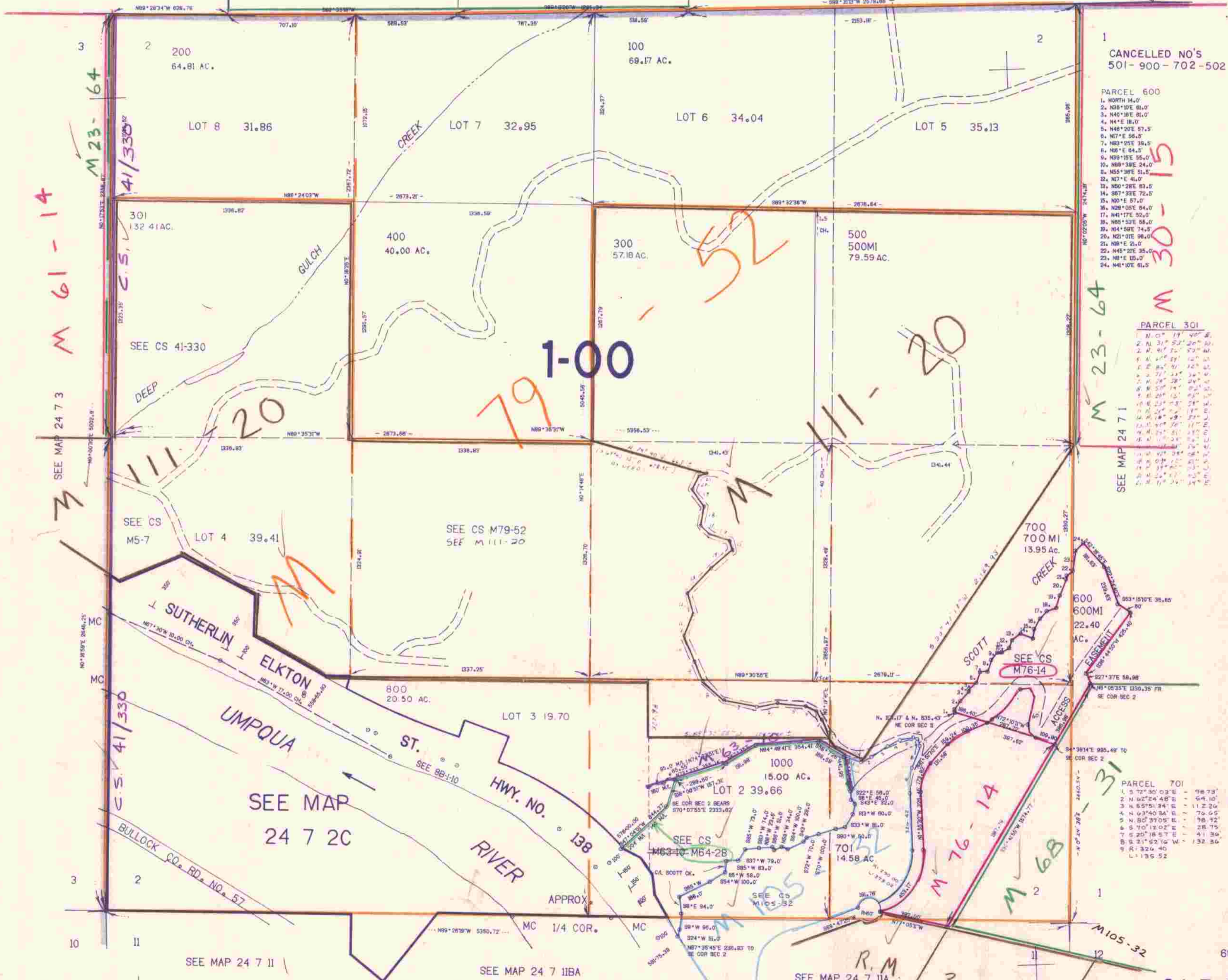
REVISED ON  
2-15-91

THIS MAP WAS PREPARED FOR  
ASSESSMENT PURPOSE ONLY.

1"=400'

M 141 - 7  
SEE MAP 23 7

35 36



CANCELLED NO'S  
501-900-702-502

- PARCEL 600
1. NORTH 14.0'
  2. N88°10'E 81.0'
  3. N40°18'E 81.0'
  4. N4°E 18.0'
  5. N48°20'E 57.5'
  6. N07°E 56.0'
  7. N83°25'E 39.5'
  8. N05°E 64.5'
  9. N39°15'E 55.0'
  10. N88°30'E 24.0'
  11. N55°30'E 51.0'
  12. N07°E 41.0'
  13. N50°28'E 83.5'
  14. S87°33'E 72.5'
  15. N00°E 57.0'
  16. N28°15'E 64.0'
  17. N41°17'E 52.0'
  18. N85°52'E 58.0'
  19. N04°58'E 74.5'
  20. N02°01'E 86.0'
  21. N8°E 21.0'
  22. N45°22'E 35.0'
  23. N0°E 15.0'
  24. N41°10'E 61.5'

- PARCEL 301
1. N 0° 19' 46" E
  2. N 31° 52' 20" W
  3. N 40° 17' 52" W
  4. N 41° 59' 12" W
  5. N 41° 59' 12" W
  6. N 77° 23' 24" W
  7. N 50° 14' 02" W
  8. N 29° 15' 02" W
  9. N 23° 33' 21" W
  10. N 21° 24' 19" E
  11. N 11° 24' 26" W
  12. N 11° 24' 26" W
  13. N 11° 24' 26" W
  14. N 11° 24' 26" W
  15. N 11° 24' 26" W
  16. N 11° 24' 26" W
  17. N 11° 24' 26" W
  18. N 11° 24' 26" W
  19. N 11° 24' 26" W
  20. N 11° 24' 26" W
  21. N 11° 24' 26" W
  22. N 11° 24' 26" W
  23. N 11° 24' 26" W
  24. N 11° 24' 26" W

- PARCEL 701
1. S 72° 30' 03" E
  2. N 02° 24' 48" E
  3. N 59° 51' 34" E
  4. N 63° 40' 34" E
  5. N 80° 37' 05" E
  6. S 70° 12' 02" E
  7. S 20° 18' 57" E
  8. S 21° 52' 10" W
  9. R 326.40
  - L 135.52

M 61-14

M 23-64

M 24 7 3

C.S. 41/330

20

79

1-00

52

20

C.S. 41/330

M 76-14

M 68

3-14

24 7 2  
& INDEX

3-91 JP