

THIS MAP WAS PREPARED FOR ASSESSMENT PURPOSE ONLY.

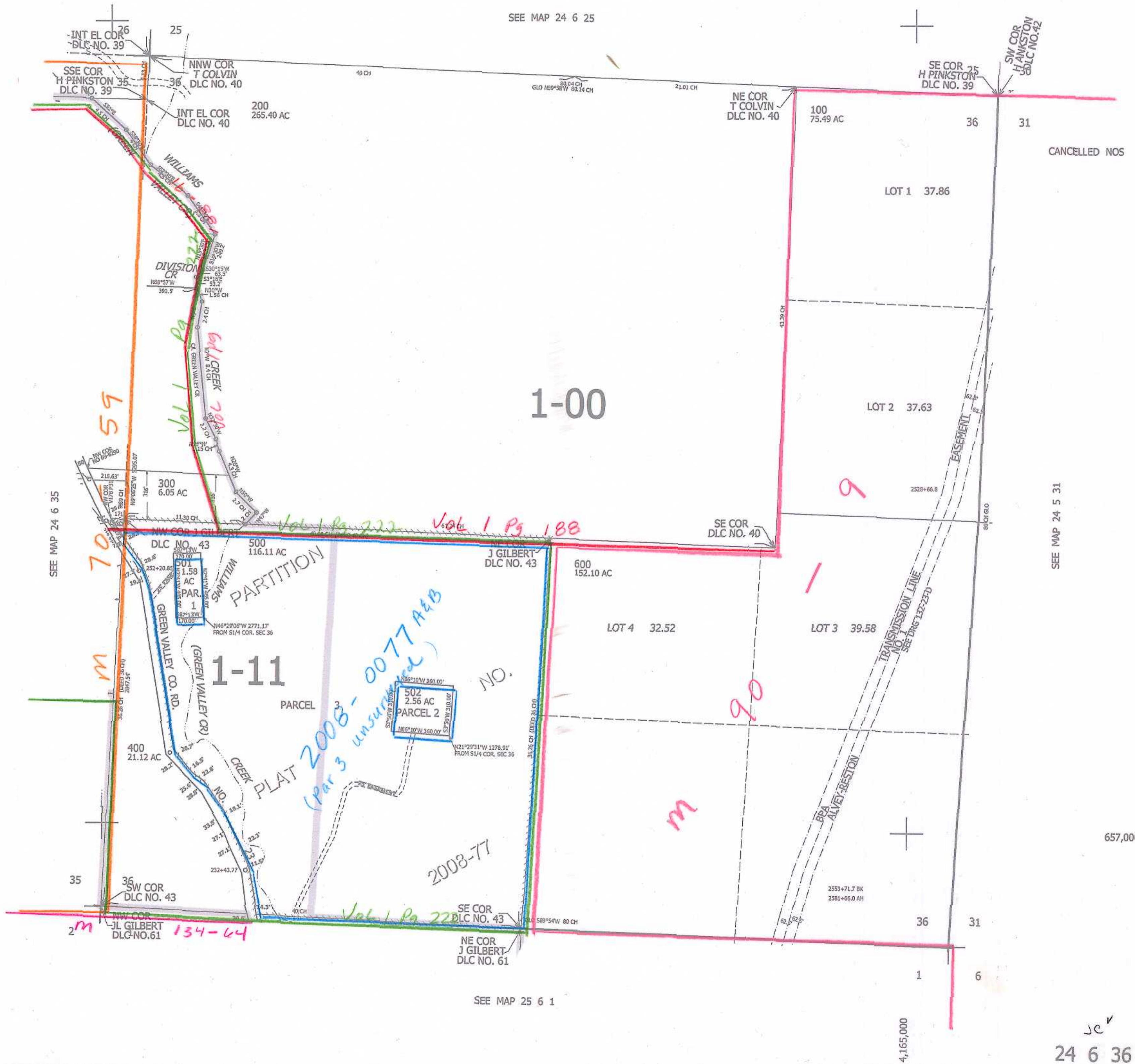
SEC.36 T.24S. R.6W. W.M.  
DOUGLAS COUNTY

1" = 400'

REVISED ON  
11-21-14

24 6 36

SEE MAP 24 6 25



SEE MAP 24 6 35

SEE MAP 24 5 31

SEE MAP 25 6 1

657,000

4,165,000

24 6 36