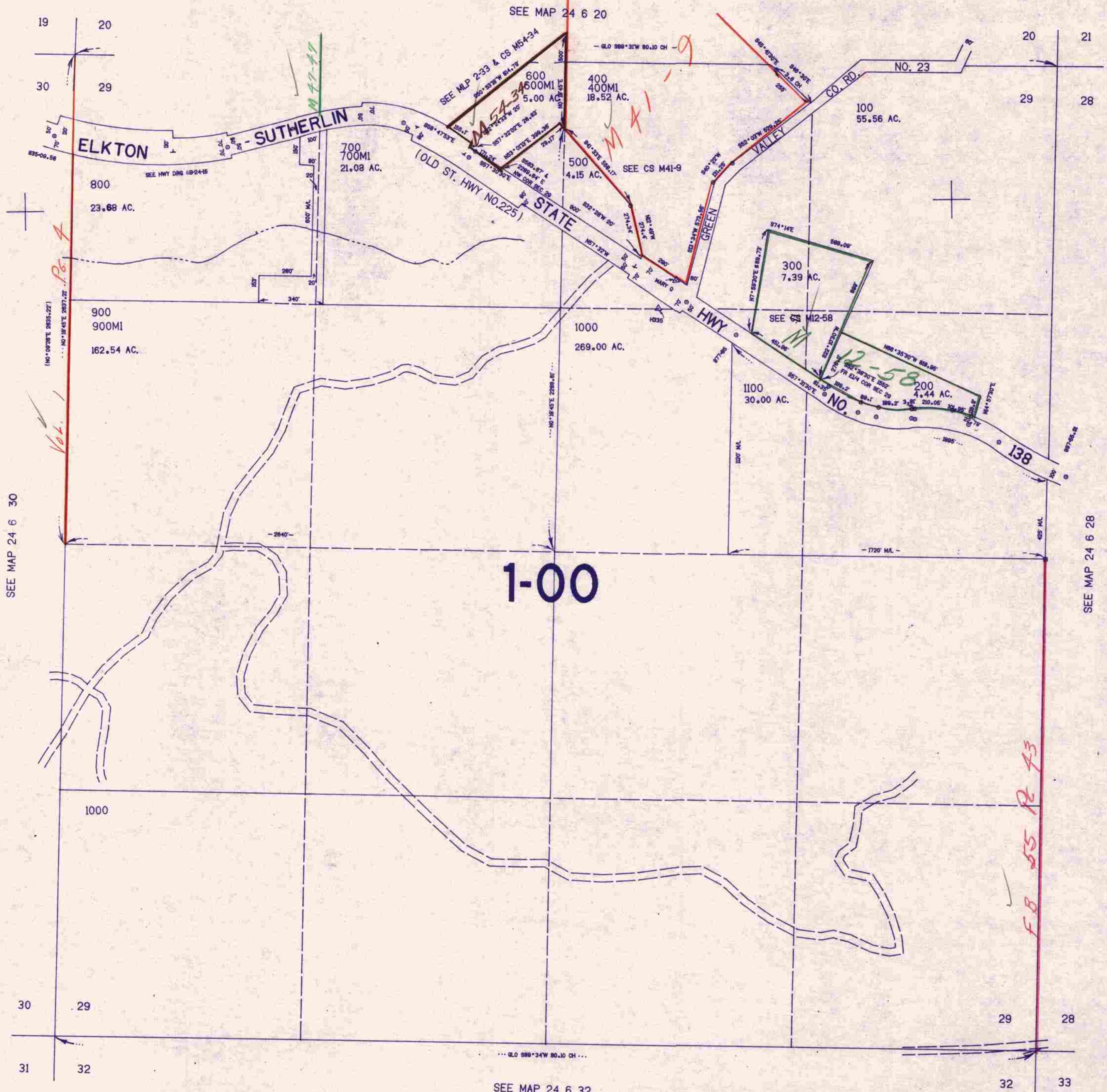


SECTION 29 T.24S. R.6W. W.M.
DOUGLAS COUNTY

24 6 29

THIS MAP WAS PREPARED FOR
ASSESSMENT PURPOSE ONLY.

1"=400'



CANCELLED NO'S.
900 M2
1000 MI
667,000

SEE MAP 24 6 30

SEE MAP 24 6 28

SEE MAP 24 6 32

1:223,000

24 6 29

184
JH