

SECTION 26 T.24S. R.6W. W.M.
DOUGLAS COUNTY

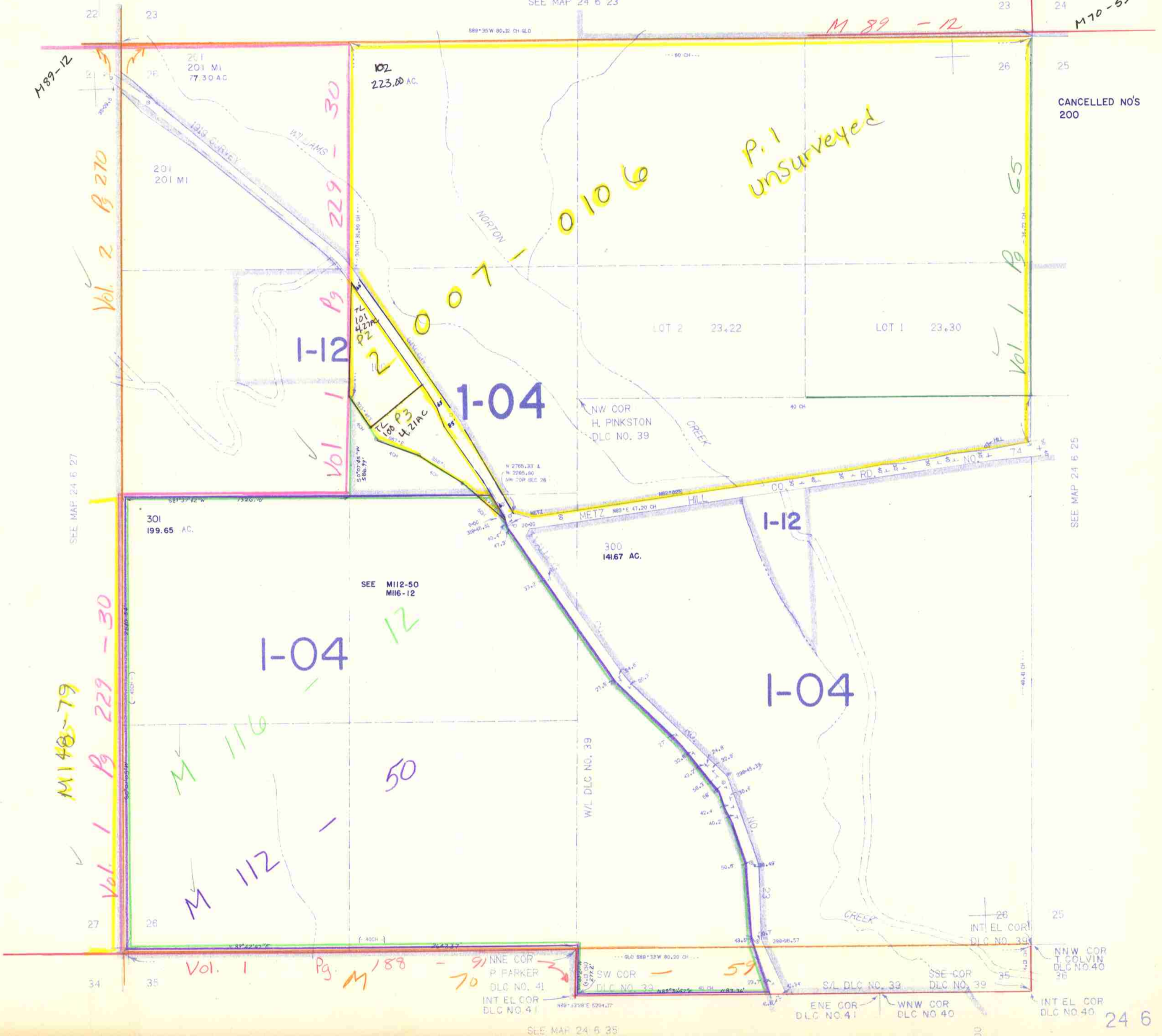
REVISED ON
1-8-93

24 6 26

THIS MAP WAS PREPARED FOR
ASSESSMENT PURPOSE ONLY.

1"=400'

SEE MAP 24 6 23



CANCELLED NO'S
200

SEE MAP 24 6 25

662,000

24 6 26

1193 86