

THIS MAP WAS PREPARED FOR ASSESSMENT PURPOSE ONLY.

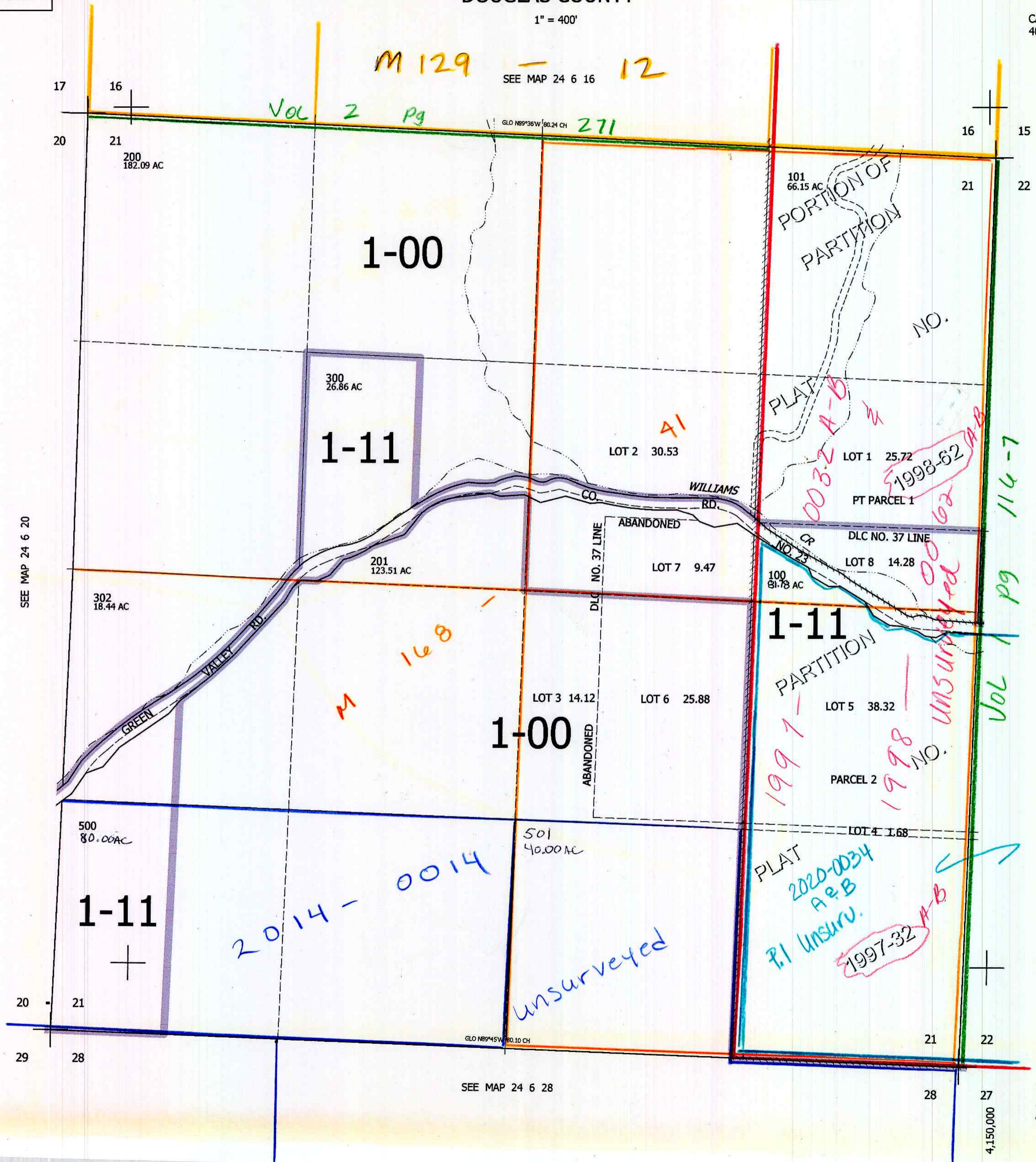
SEC.21 T.24S. R.6W. W.M. DOUGLAS COUNTY

REVISED ON 5-16-08

24 6 21

1" = 400'

CANCELLED NOS 400 401 301



SEE MAP 24 6 20

SEE MAP 24 6 22

668,000

SEE MAP 24 6 28

cm 5/20/08

24 6 21