

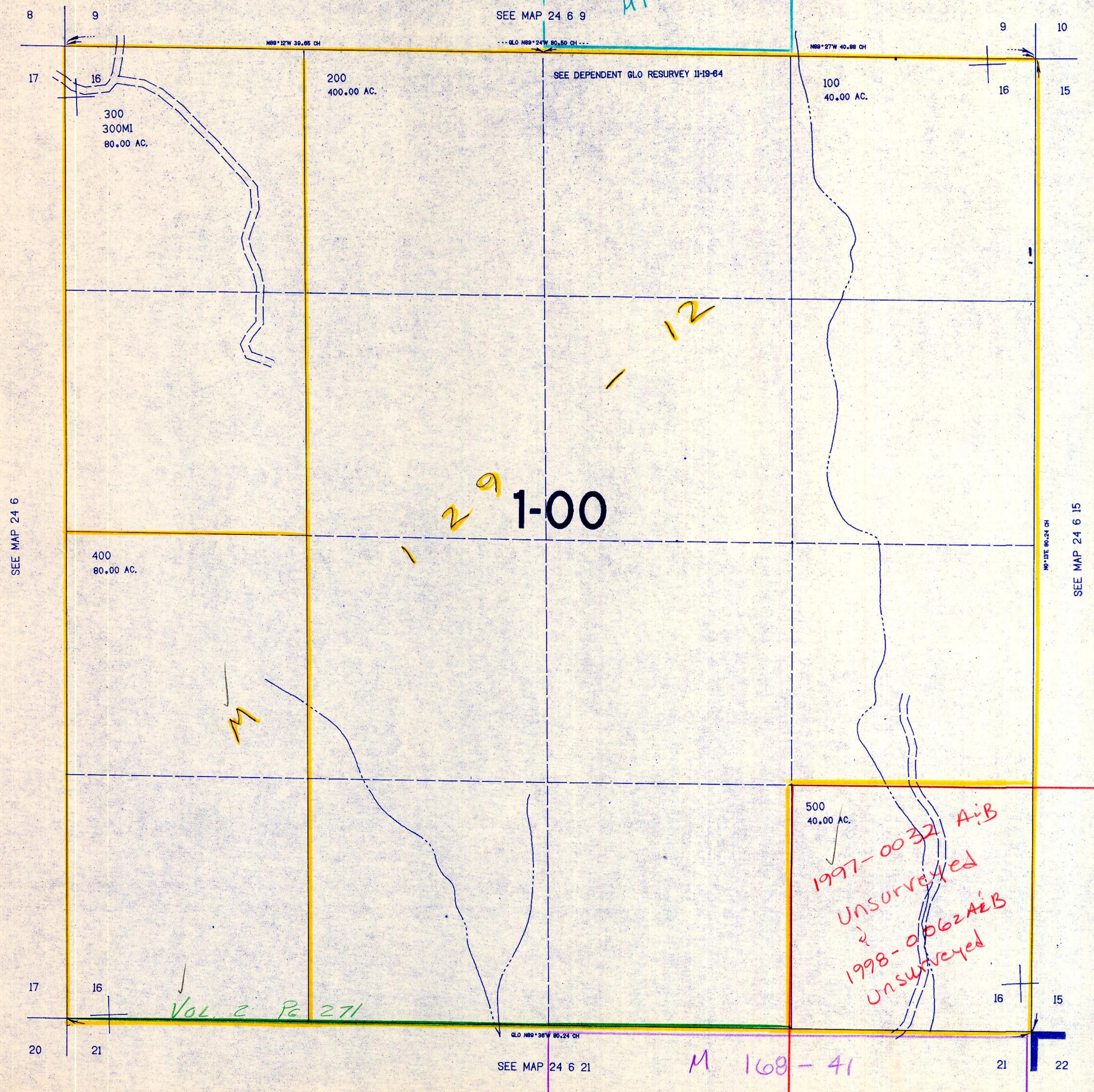
SECTION 16 T.24S. R.6W. W.M.  
DOUGLAS COUNTY

24 6 16

THIS MAP WAS PREPARED FOR  
ASSESSMENT PURPOSE ONLY.

1"=400'

*H174-53*



SEE MAP 24 6 9

SEE DEPENDENT GLO RESURVEY 11-19-64

200  
400.00 AC.

100  
40.00 AC.

300  
300MI  
80.00 AC.

**1-00**

400  
80.00 AC.

500  
40.00 AC.

*1997-0032 A:B  
UNsurveyed  
&  
1998-0062A:B  
UNsurveyed*

*VOL 2 Pg 271*

SEE MAP 24 6 21

*M 109-41*

673.000

24 6 16

1,229,000

*5/24/98*