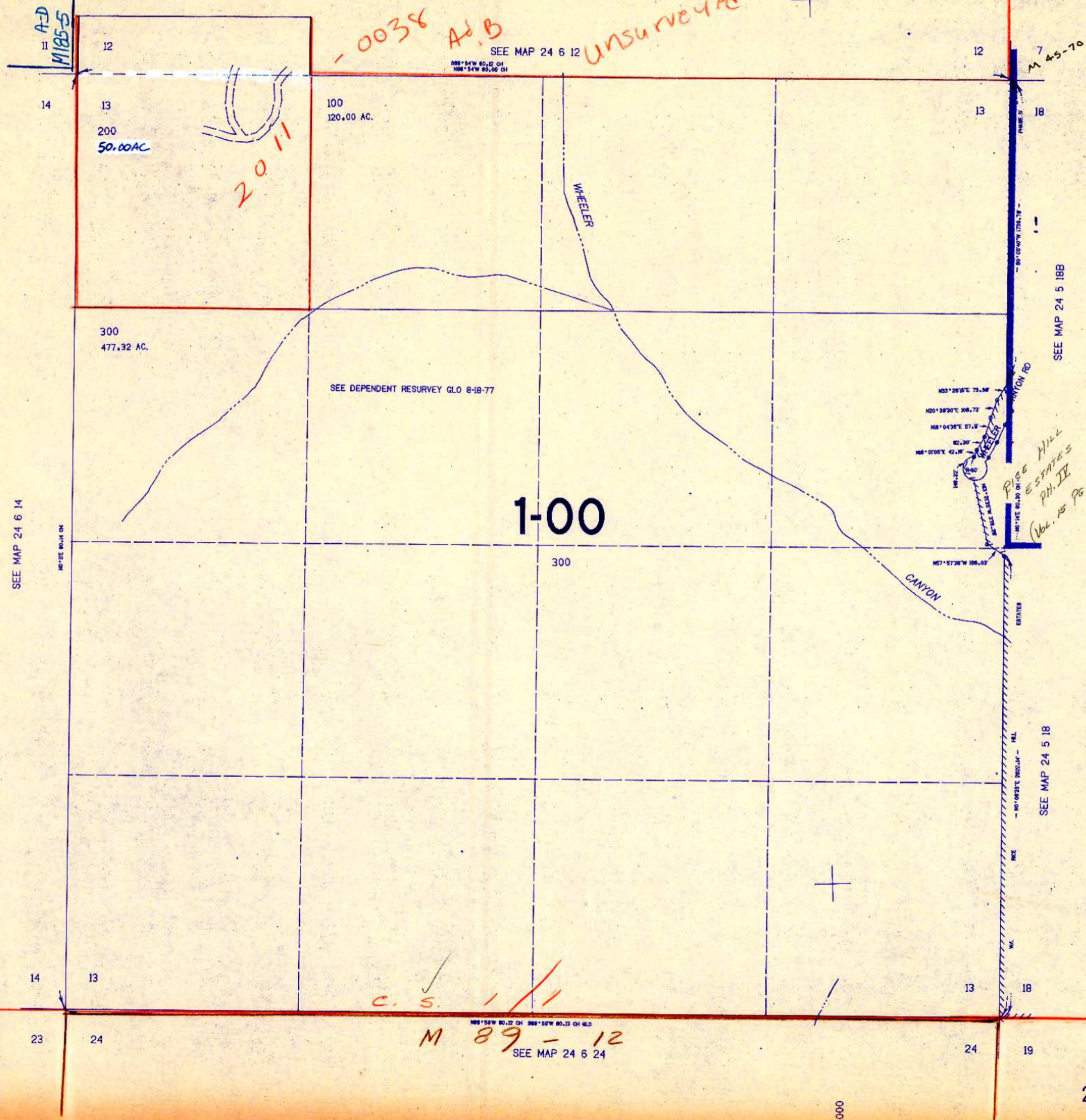


SECTION 13 T.24S. R.6W. W.M.  
DOUGLAS COUNTY

24 6 13

THIS MAP WAS PREPARED FOR  
ASSESSMENT PURPOSE ONLY.

1"=400'



0038 A.B UNSURVEYED

A-D  
M 185-5

20 11

1-00

RISE HILL  
ESTATES  
PH. II  
(Vol. 15 Pg 23)

C.S. ✓  
M 89-12

SEE MAP 24 6 14

SEE MAP 24 5 18B

SEE MAP 24 5 18

SEE MAP 24 6 24

673,000

1244,000

24 6 13

5/10/13