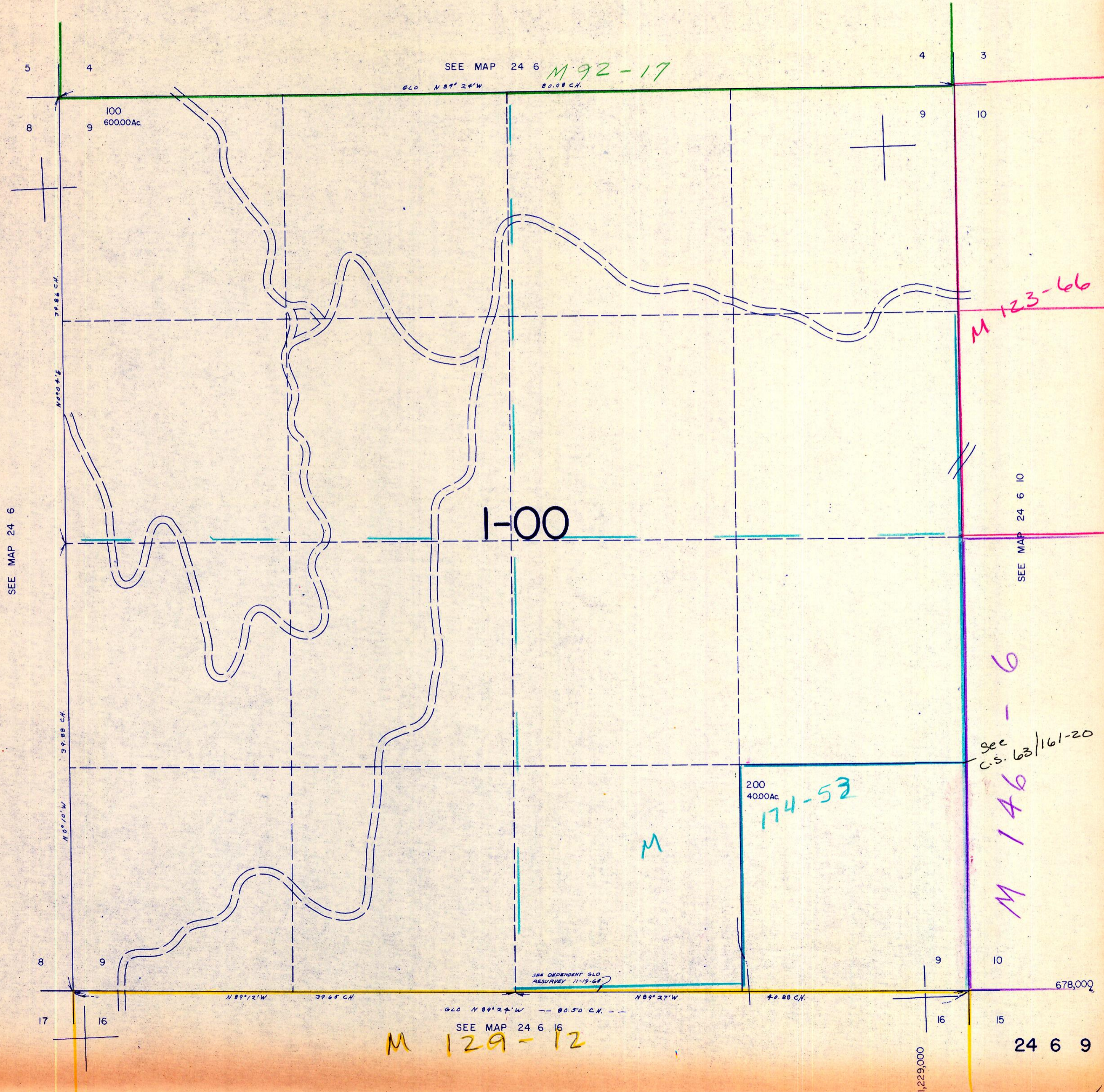


SECTION 9 T.24S. R. 6 W. W.M.
DOUGLAS COUNTY

24 6 9

THIS MAP WAS PREPARED FOR
ASSESSMENT PURPOSE ONLY.

1" = 400'



SEE MAP 24 6 *M 92-17*
GLO N 89° 24' W 80.08 CH.

100
600.00Ac.

I-00

M 123-66

SEE MAP 24 6

SEE MAP 24 6 10

see
C.S. 63/161-20

200
4000Ac.
174-52

M 146

SEE DEPENDENT GLO
RESURVEY 11-19-68

GLO N 89° 24' W 80.50 CH.

M 129-12

678,000

24 6 9

1,229,000

5/18/84