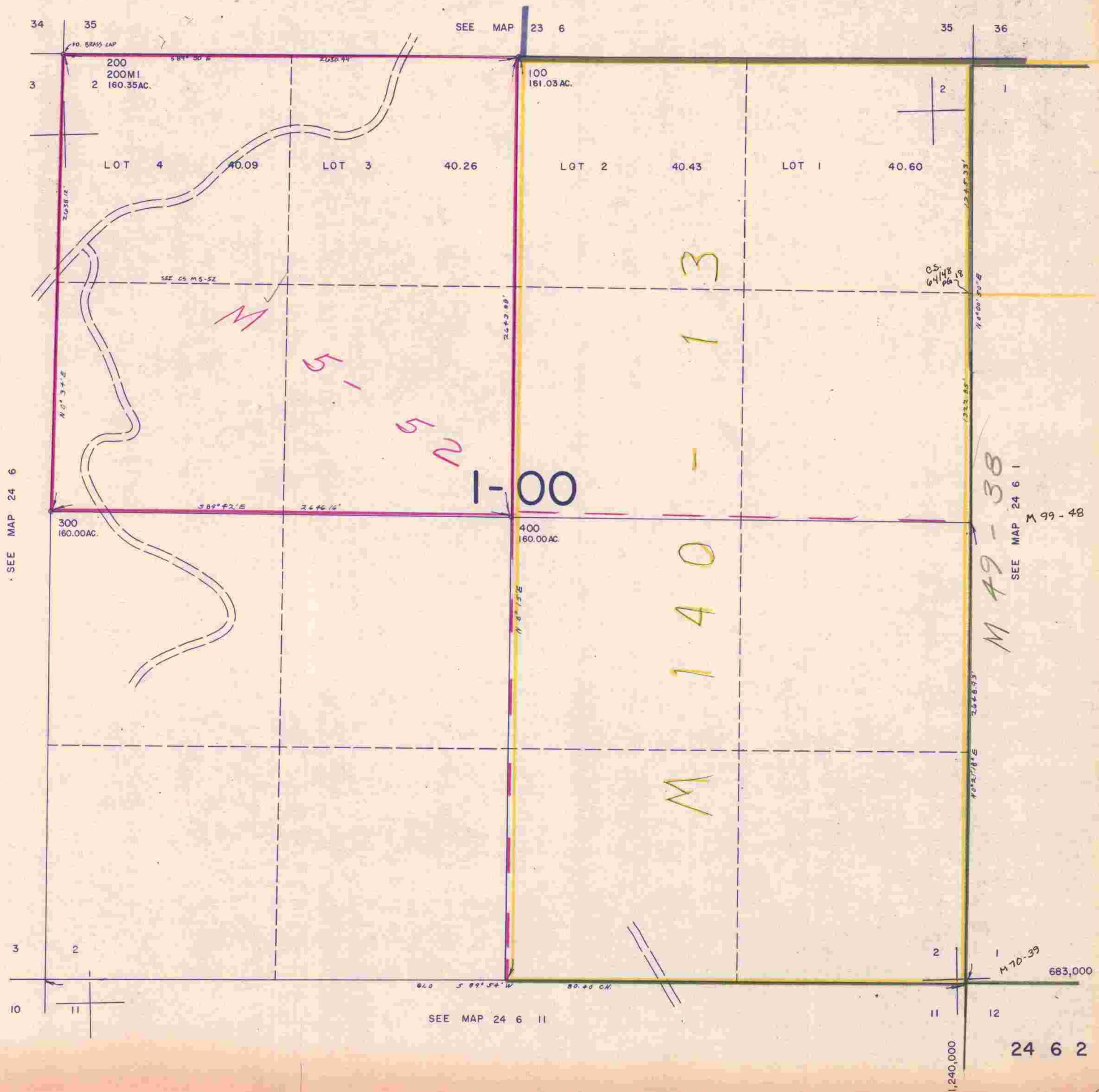


THIS MAP WAS PREPARED FOR ASSESSMENT PURPOSE ONLY.

SECTION 2 T.24S. R. 6 W. W.M.  
DOUGLAS COUNTY

24 6 2

1" = 400'



SEE MAP 24 6

SEE MAP 23 6

M 49-38

SEE MAP 24 6 1

M 99-48

SEE MAP 24 6 11

M 70-39

683,000

24 6 2

1,240,000