

SW1/4 SE1/4 SEC. 33 T.24S. R.5W. W.M.
DOUGLAS COUNTY

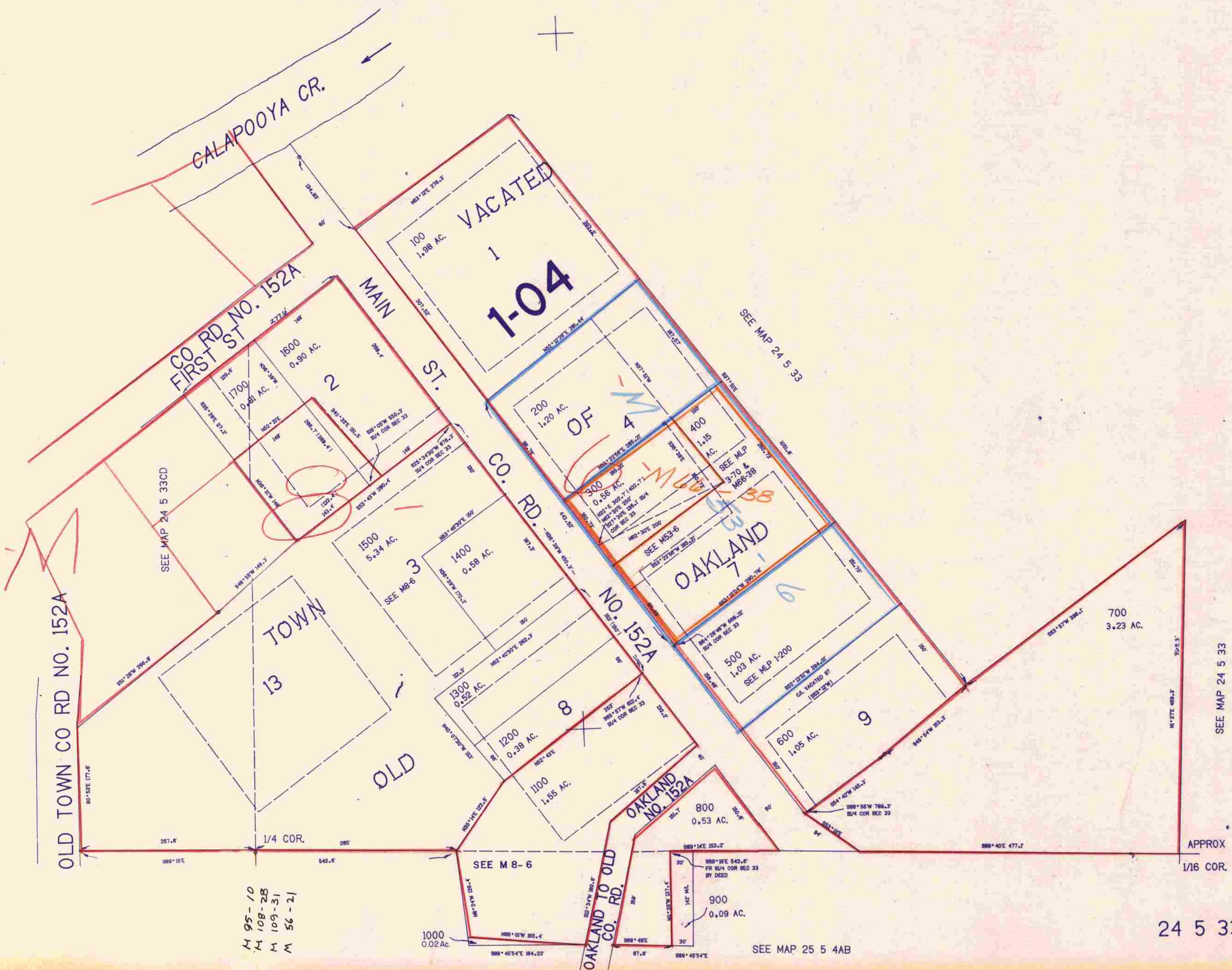
24 5 33DC

THIS MAP WAS PREPARED FOR
ASSESSMENT PURPOSE ONLY.

1"=400'

APPROX
1/16 COR.

APPROX
1/16 COR.



OLD TOWN CO RD NO. 152A

CO RD NO. 152A
FIRST ST.

MAIN ST.

CO. RD.

OAKLAND
7

TOWNSHIP
13

OLD

NO. 152A

OAKLAND
NO. 152A

SEE MAP 24 5 33

656.000

APPROX
1/16 COR.

M 95-10
M 108-28
M 109-31
M 56-21

1000
0.02 AC.

SEE M 8-6

SEE MAP 25 5 4AB

24 5 33DC

1.259.000