

SE1/4 SW1/4 SEC. 33 T.24S. R.5W. W.M.
DOUGLAS COUNTY

24 5 33CD

THIS MAP WAS PREPARED FOR
ASSESSMENT PURPOSE ONLY.

1"=100'

APPROX
1/16 COR.

APPROX
1/16 COR.

SEE MAP 24 5 33

SEE MAP 24 5 33

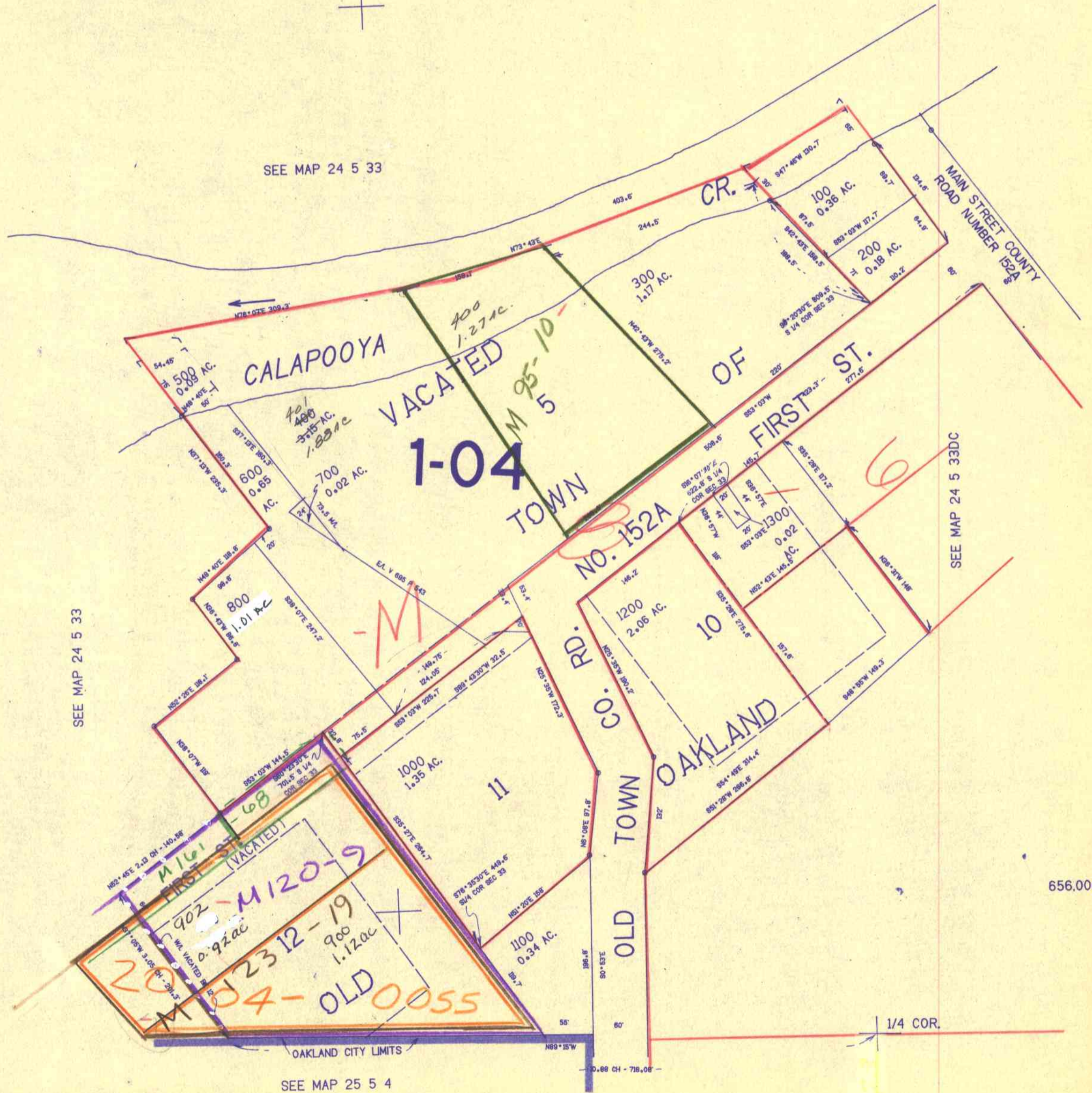
SEE MAP 24 5 33DC

SEE MAP 25 5 4

656.000

1.257.000

24 5 33CD



APPROX
1/16 COR.

1/4 COR.