

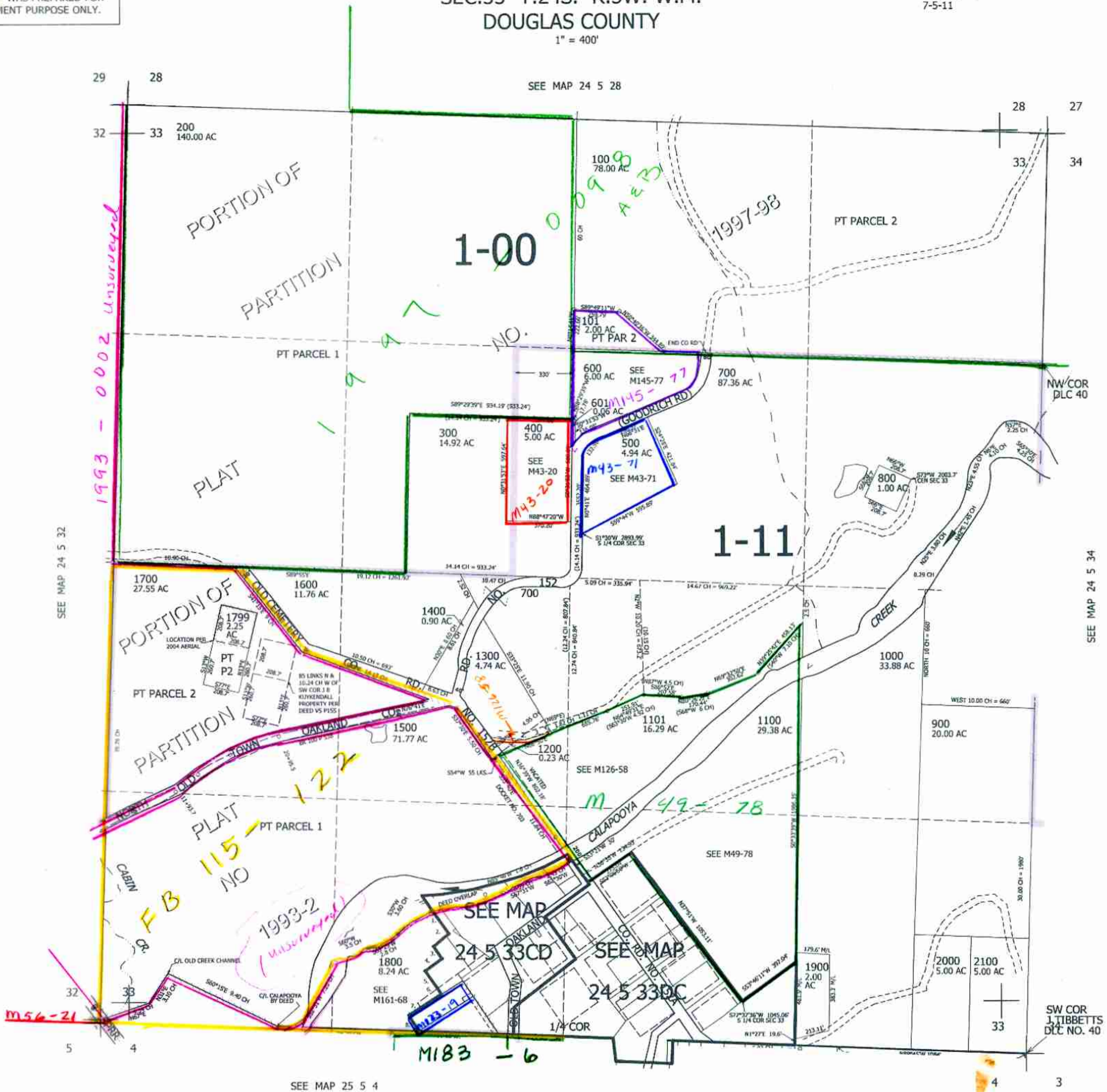
THIS MAP WAS PREPARED FOR ASSESSMENT PURPOSE ONLY.

SEC.33 T.24S. R.5W. W.M.
DOUGLAS COUNTY

1" = 400'

REVISED ON
7-5-11

24 5 33
& INDEX



661,000

CANCELLED NOS
1701 1801 1201
1301 1702 100M1
1802

PARCEL 1300

- S86°40'28"E 199.65' (SURVEY)
- 77°04'51"E 61.09'
- N62°56'35"E 98.65'
- N44°22'44"E 41.07'

PARCEL 1800

- N37°W 3.5 CH. PLS.
- N37°13'W 160.2'
- N58°E 1.74 CH.
- N48°40'E 118.8'
- N37°W 1.32 CH.
- N39°43'W 86.0'
- N58°E 1.81 CH.
- N52°20'E 118.1'
- N37°W 1.91 CH.
- N18°07'W 119'
- N38°33'10"W 44.31'
- S55°21'35"W 227.5'
- S34°38'25"E 104.18'

cm
5/17/10
JCV

24 5 33
& INDEX

4,181,000