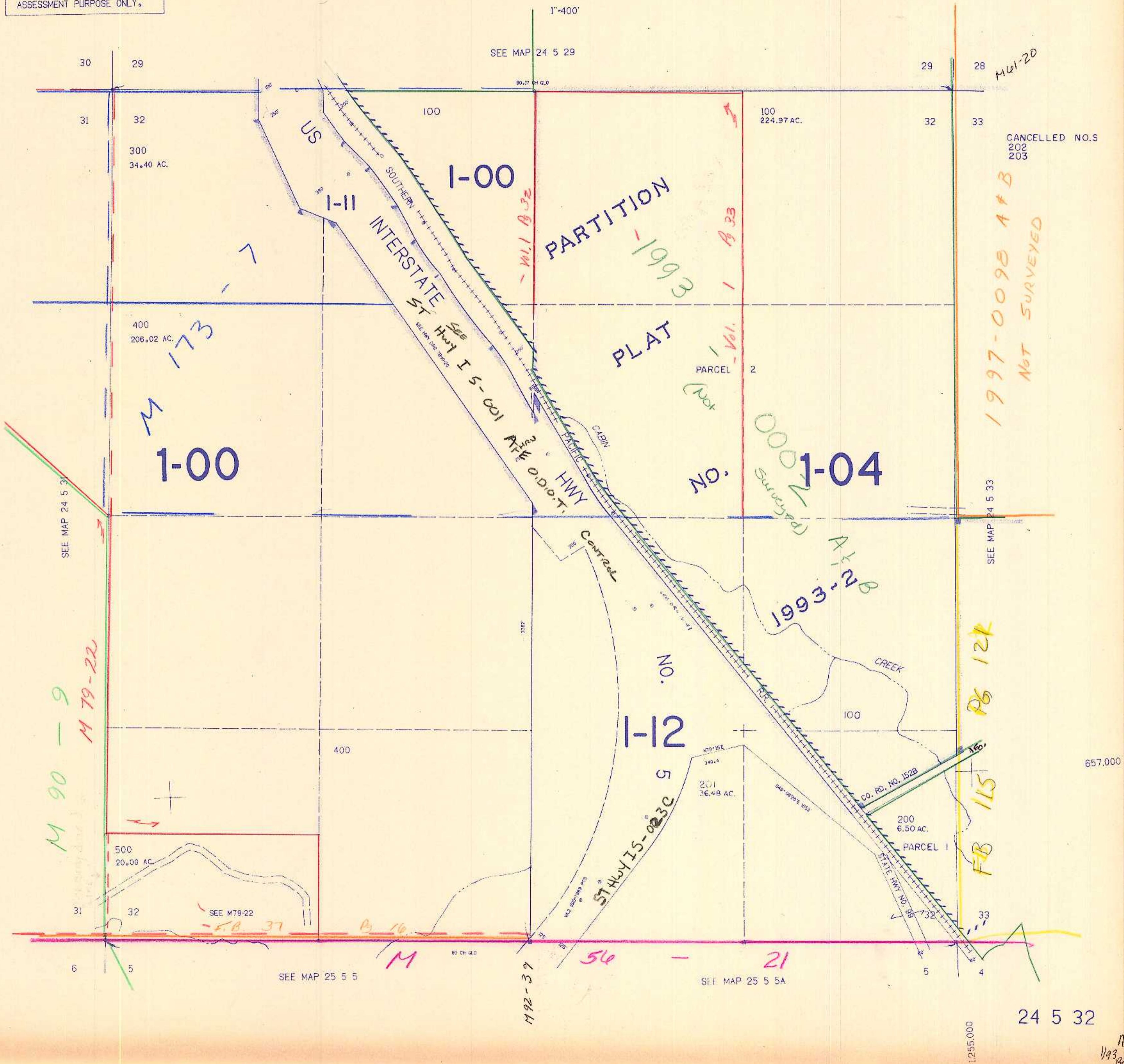


SECTION 32 T.24S. R.5W. W.M.
DOUGLAS COUNTY

REVISED ON
1-19-93

24 5 32

THIS MAP WAS PREPARED FOR
ASSESSMENT PURPOSE ONLY.



CANCELLED NO.S
202
203

1997-0098 A+B
NOT SURVEYED

FB 115
PB 12K

657.000

24 5 32

NW
1/93/90