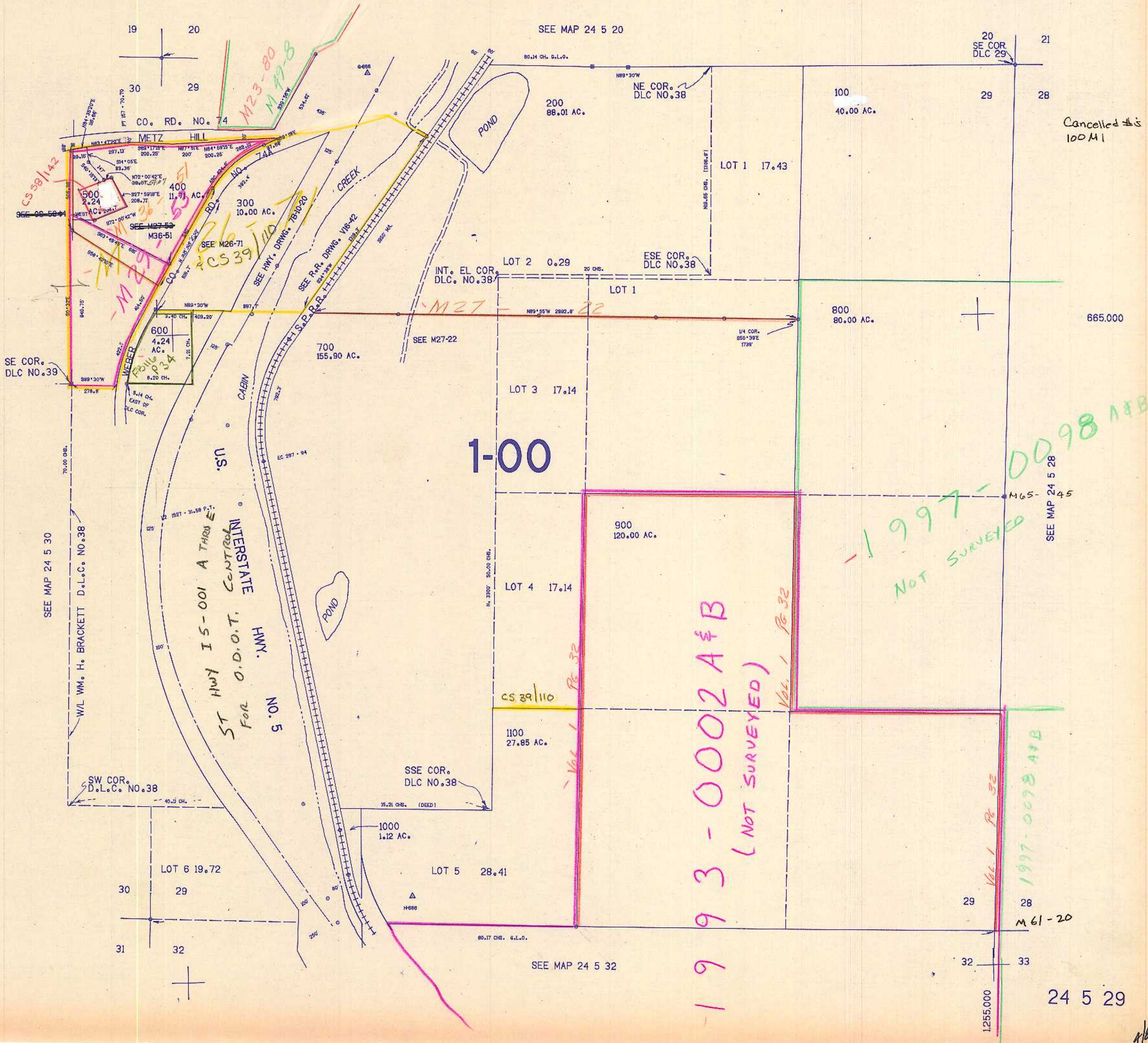


SECTION 29 T.24S. R.5W. W.M.
DOUGLAS COUNTY

24 5 29

THIS MAP WAS PREPARED FOR
ASSESSMENT PURPOSE ONLY.

1"=400'



Cancelled # is
100 M1

1-00

1993-0002A&B
(NOT SURVEYED)

1997-0098A&B
NOT SURVEYED

1997-0098A&B

24 5 29