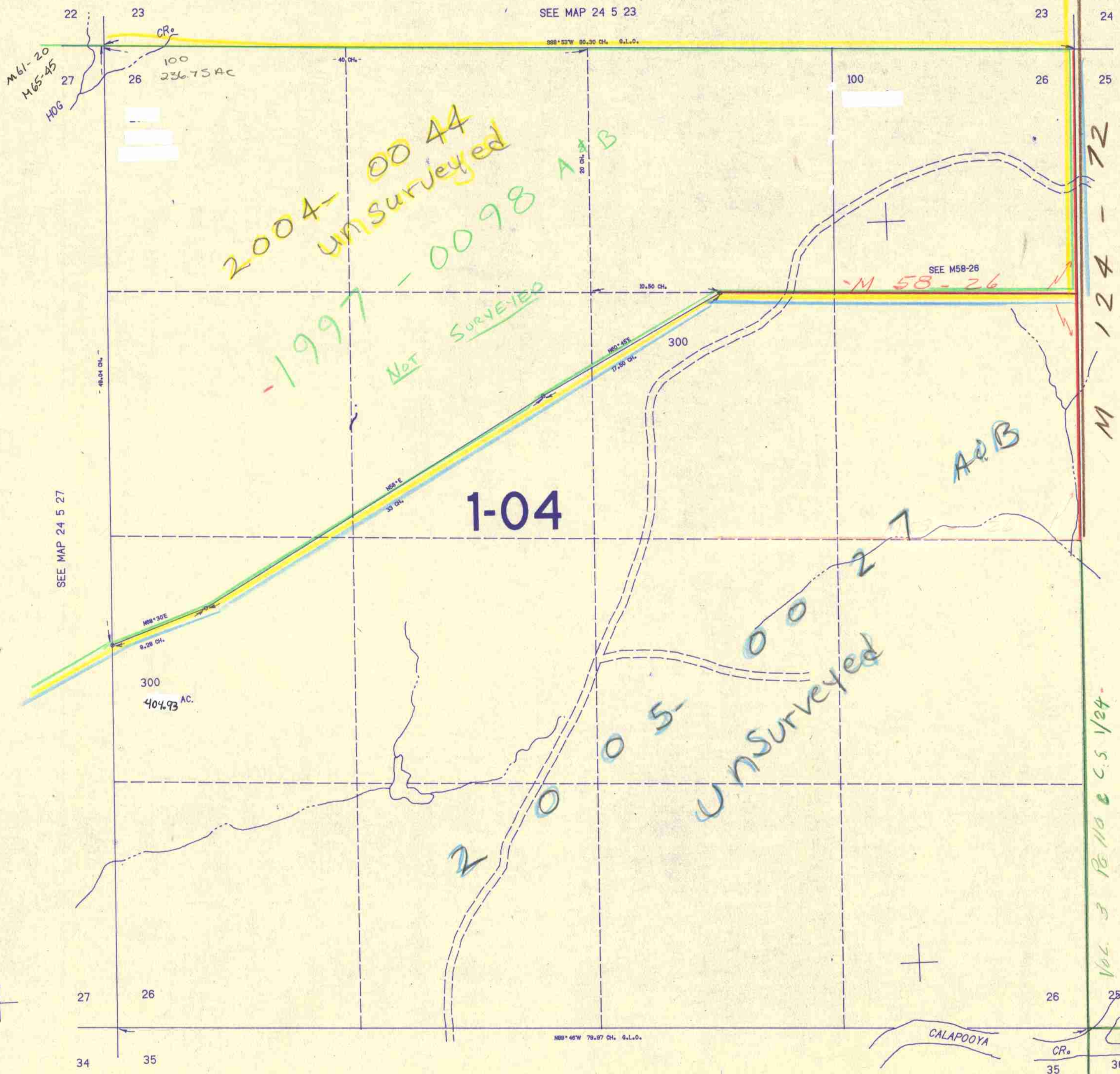


SECTION 26 T.24S. R.5W. W.M.  
DOUGLAS COUNTY

24 5 26

THIS MAP WAS PREPARED FOR  
ASSESSMENT PURPOSE ONLY.

1"=400'



Cancelled  
200 M  
200

M 124 - 72

A & B

20027

Vol. 3 Bello & C.S. 1/24

SEE MAP 24 5 25

SEE MAP 24 5 27

SEE MAP 24 5 23

SEE MAP 24 5 35

661.000

24 5 26