

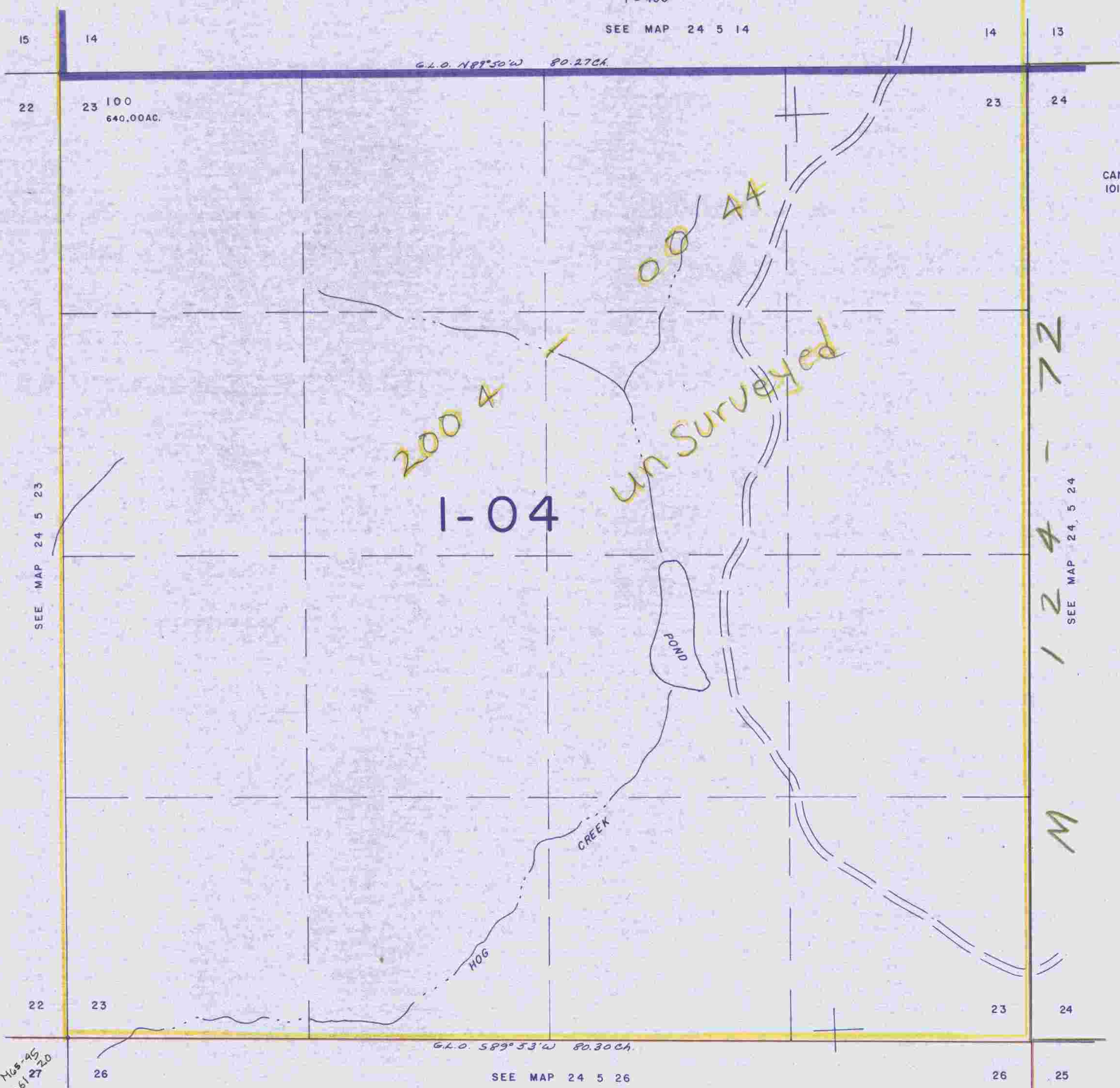
THIS MAP WAS PREPARED FOR ASSESSMENT PURPOSE ONLY.

SECTION 23 T.24S. R. 5 W. W.M.  
DOUGLAS COUNTY

24 5 23

1" = 400'

SEE MAP 24 5 14



670,000

CANCELLED NO.S  
101

SEE MAP 24 5 23

SEE MAP 24 5 24

124-72  
M

M65-45  
M61-2720

SEE MAP 24 5 26

1997 - 0098 A + B

1,270,000

24 5 23

8/90  
1/5