

THIS MAP WAS PREPARED FOR ASSESSMENT PURPOSE ONLY.

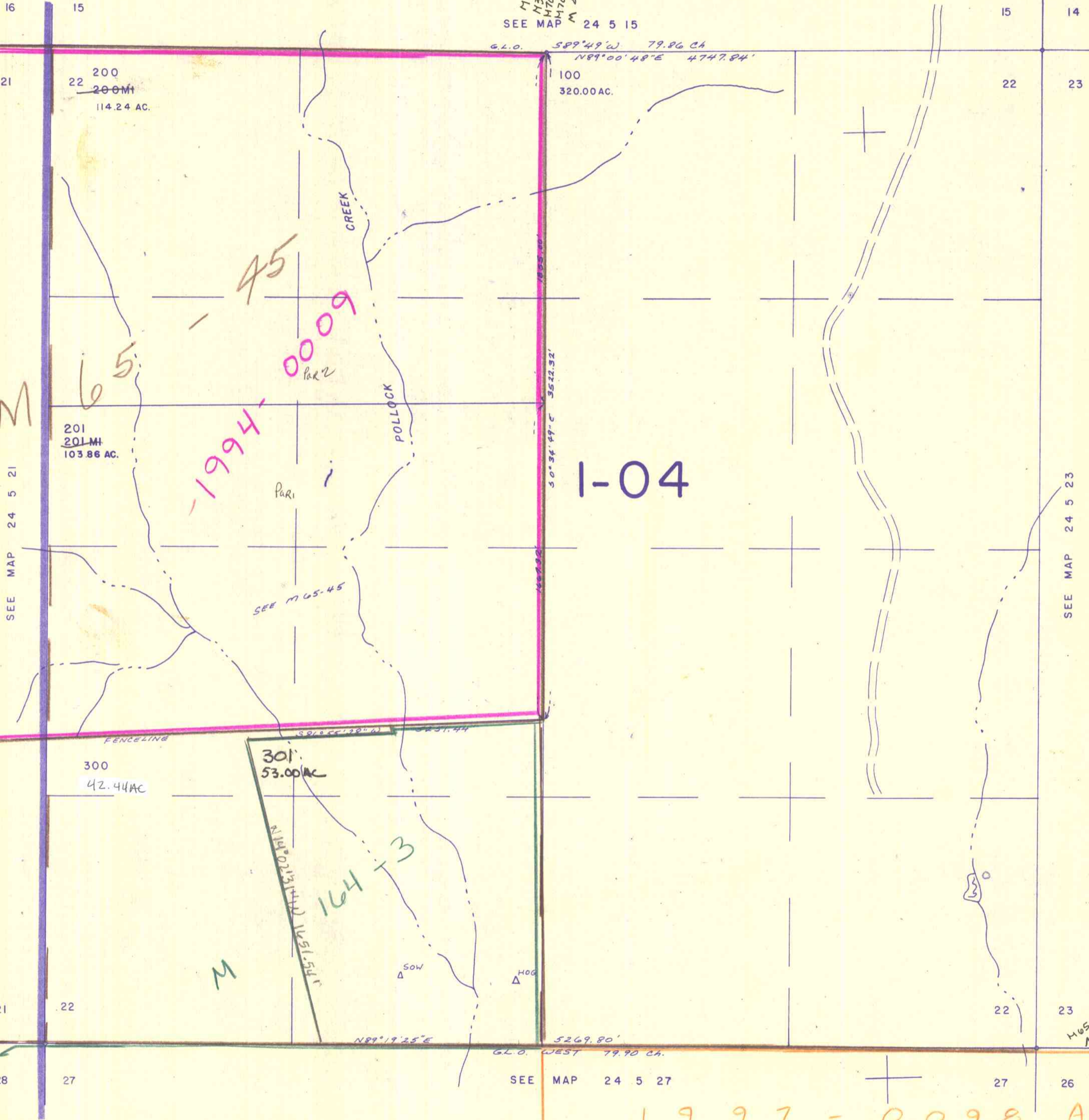
SECTION 22 T.24S. R. 5 W. W.M. DOUGLAS COUNTY

24 5 22

1" = 400'

M 128-79
M 53-67
M 70-63
M 170-50
M 49-48

SEE MAP 24 5 15



670,000
Cancelled
200 MI
201 MI

SEE MAP 24 5 23

SEE MAP 24 5 21

SEE MAP 24 5 27

1997-0098 A & B

1,265,000

24 5 22

46K