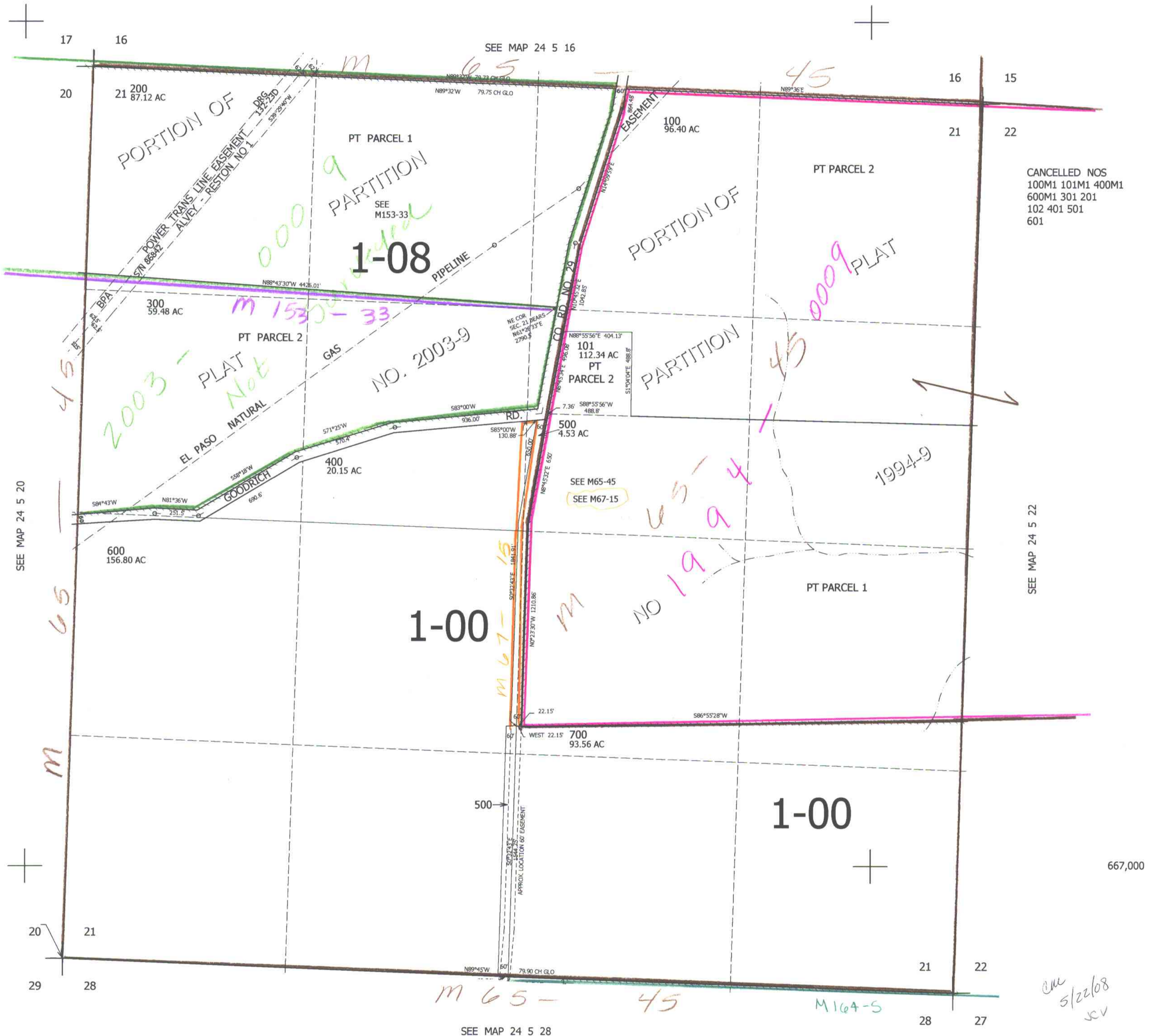


THIS MAP WAS PREPARED FOR ASSESSMENT PURPOSE ONLY.

SEC.21 T.24S. R.5W. W.M.  
DOUGLAS COUNTY  
1" = 400'

REVISED ON  
5-20-08

24 5 21



CANCELLED NOS  
100M1 101M1 400M1  
600M1 301 201  
102 401 501  
601

SEE MAP 24 5 22

667,000

me  
5/22/08  
sv

4,181,000

24 5 21