

THIS MAP WAS PREPARED FOR ASSESSMENT PURPOSE ONLY.

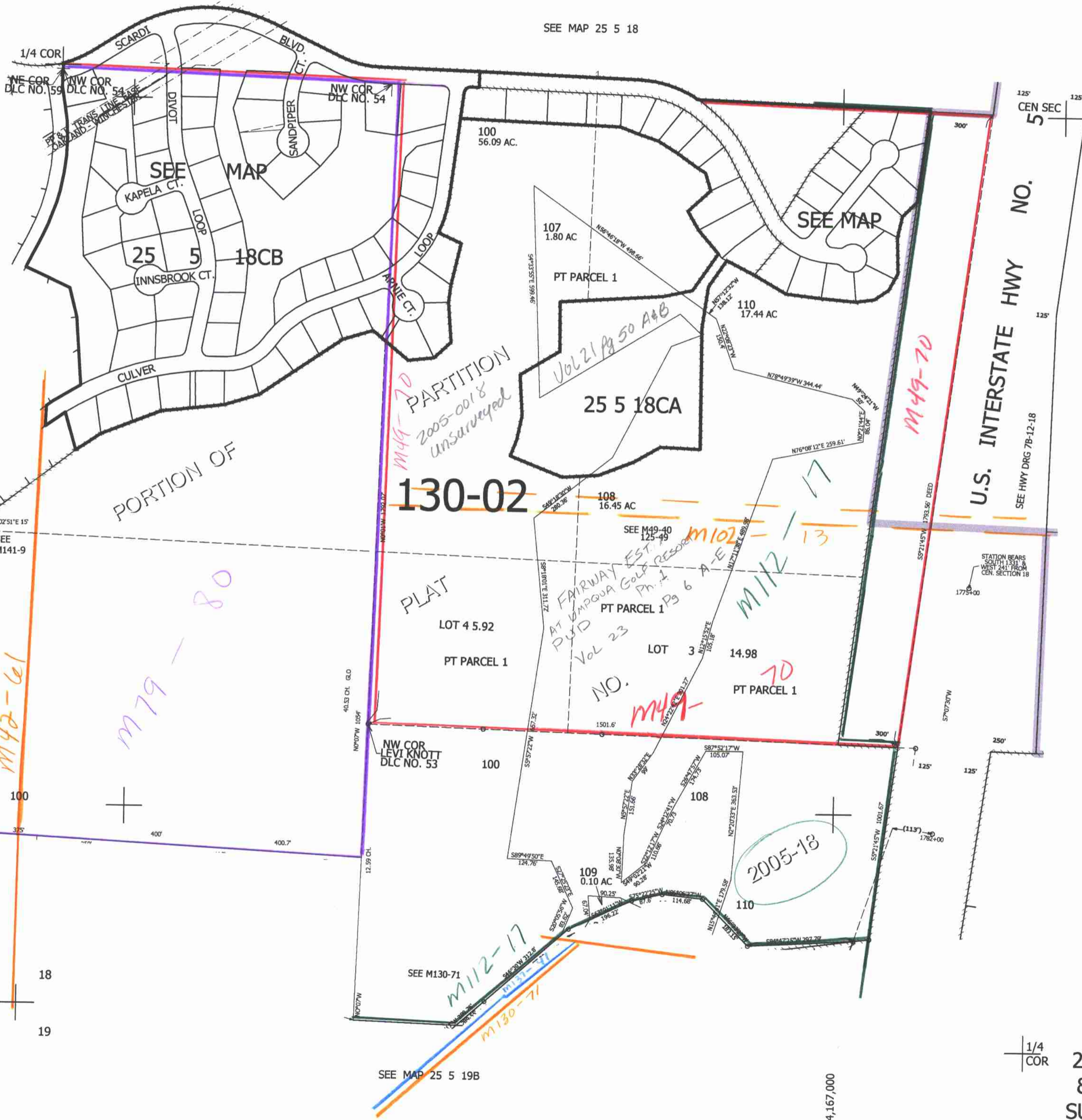
SW1/4 SEC.18 T.25S. R.5W. W.M.
DOUGLAS COUNTY

1" = 200'

REVISED ON
6-25-07

25 5 18C
& INDEX
SUTHERLIN

SEE MAP 25 5 18



CANCELLED NOS
102 103 104
105 101 106

SEE MAP 25 5 18

641,000

SEE MAP 25 6 13DA

SEE MAP 25 6 13

13	18
24	19

SEE MAP 25 5 19B

1/4 COR
25 5 18C
& INDEX
SUTHERLIN

6/26/07