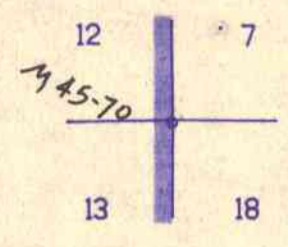


NW 1/4 SEC. 18 T.24S. R.5W. W.M.  
DOUGLAS COUNTY

24 5 18B

THIS MAP WAS PREPARED FOR  
ASSESSMENT PURPOSE ONLY.

1"=200'

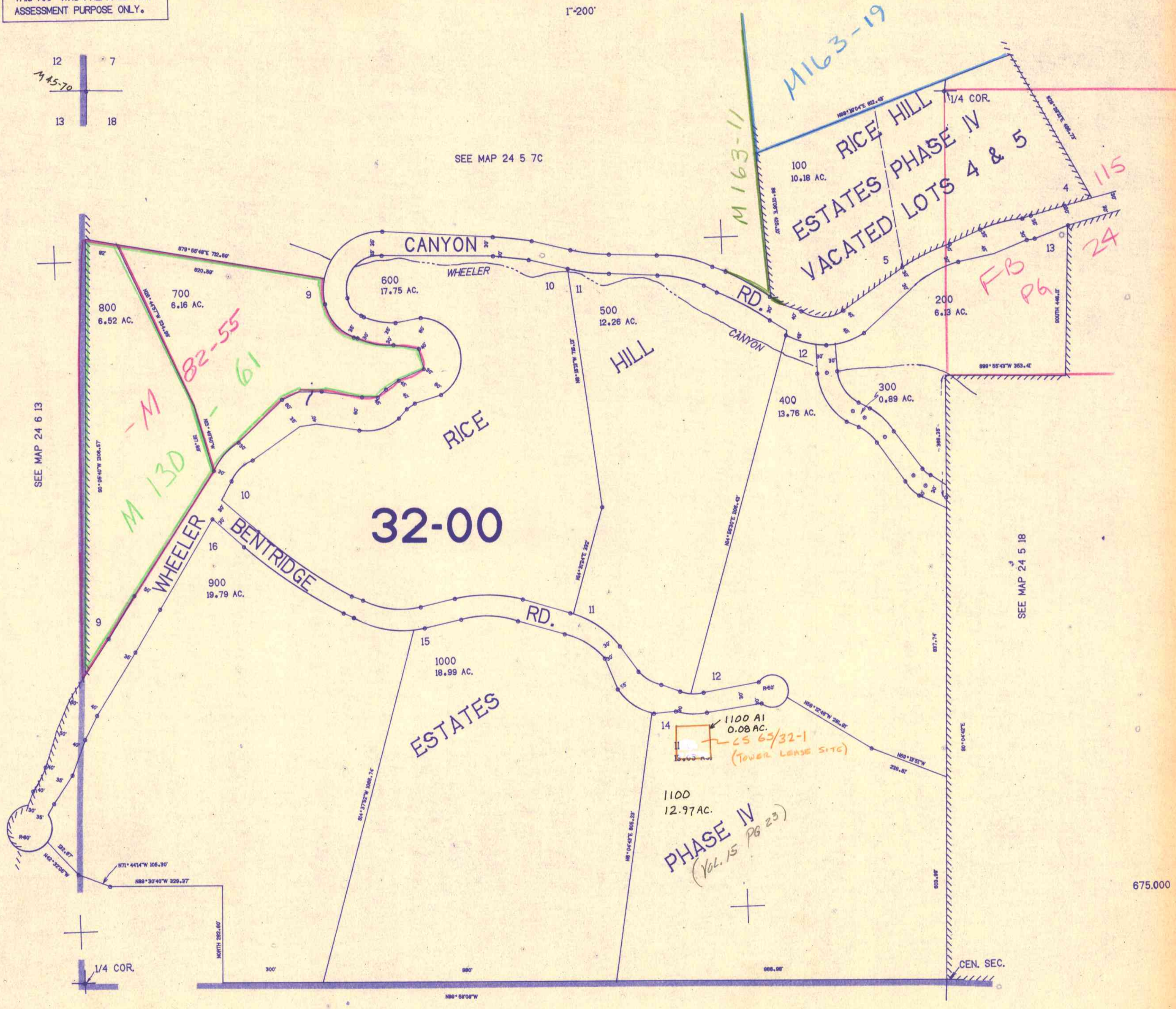


SEE MAP 24 5 7C

SEE MAP 24 6 13

SEE MAP 24 5 18

SEE MAP 24 5 18



675.000

1274.000

24 5 18B

3/2/24