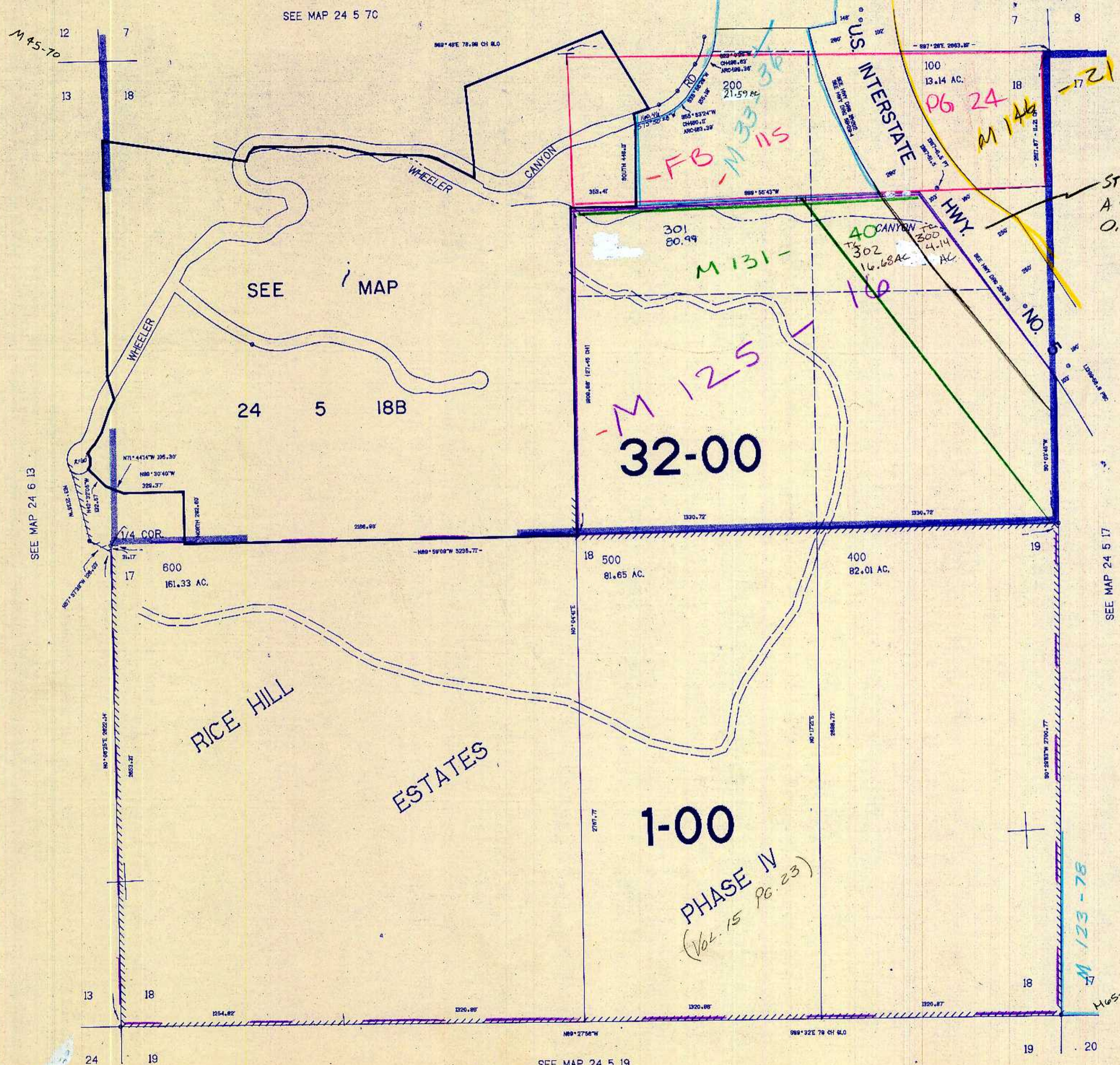


SECTION 18 T.24S. R.5W. W.M.
DOUGLAS COUNTY

THIS MAP WAS PREPARED FOR
ASSESSMENT PURPOSE ONLY.

1"=400'



M 45-70

SEE MAP 24 5 7C

SEE MAP 24 5 7D

SEE MAP

SEE MAP 24 6 13

SEE MAP 24 5 17

SEE MAP 24 5 19

M 101-39

M 123-78

M 65-95

M 125
32-00

1-00

PHASE IV
(Vol. 15 PG. 23)

M 131-
10

-FB-
M 33-36
115

P6 24
M 144

-21

ST HWY IS-001
A THRO E
O.D.O.T. CONTROL

RICE HILL
ESTATES

1,245,000

673,000