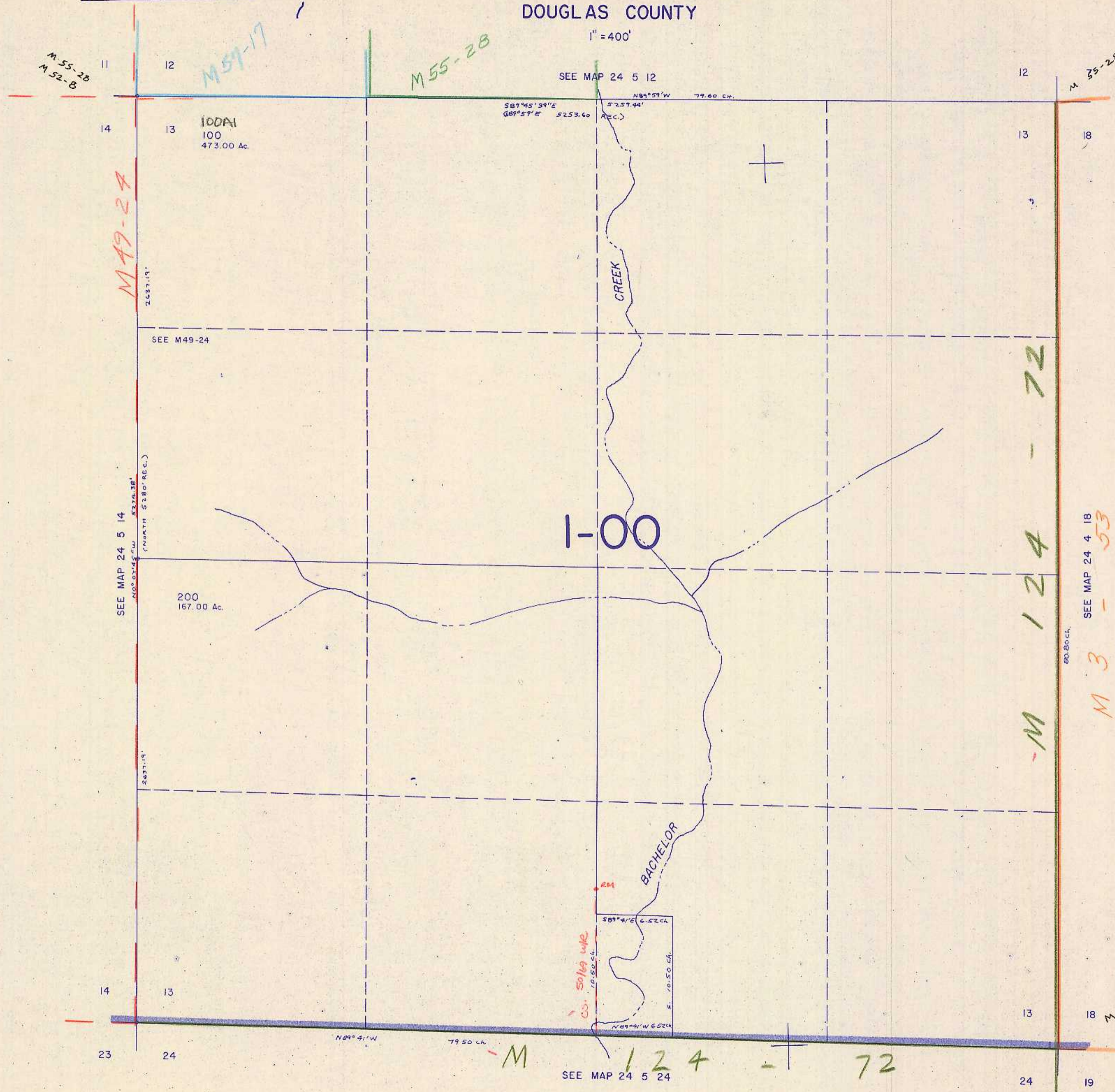


THIS MAP WAS PREPARED FOR  
ASSESSMENT PURPOSE ONLY.

SECTION 13 T.24S. R.5W. W.M.  
DOUGLAS COUNTY

24 5 13

1" = 400'



M 55-28  
M 52-B

M 57-17

M 55-28

M 55-28

M 49-24

M 124 - 72

M 3 - 53

M

M 124 - 72

M 101-39

24 5 13

3/8/28