

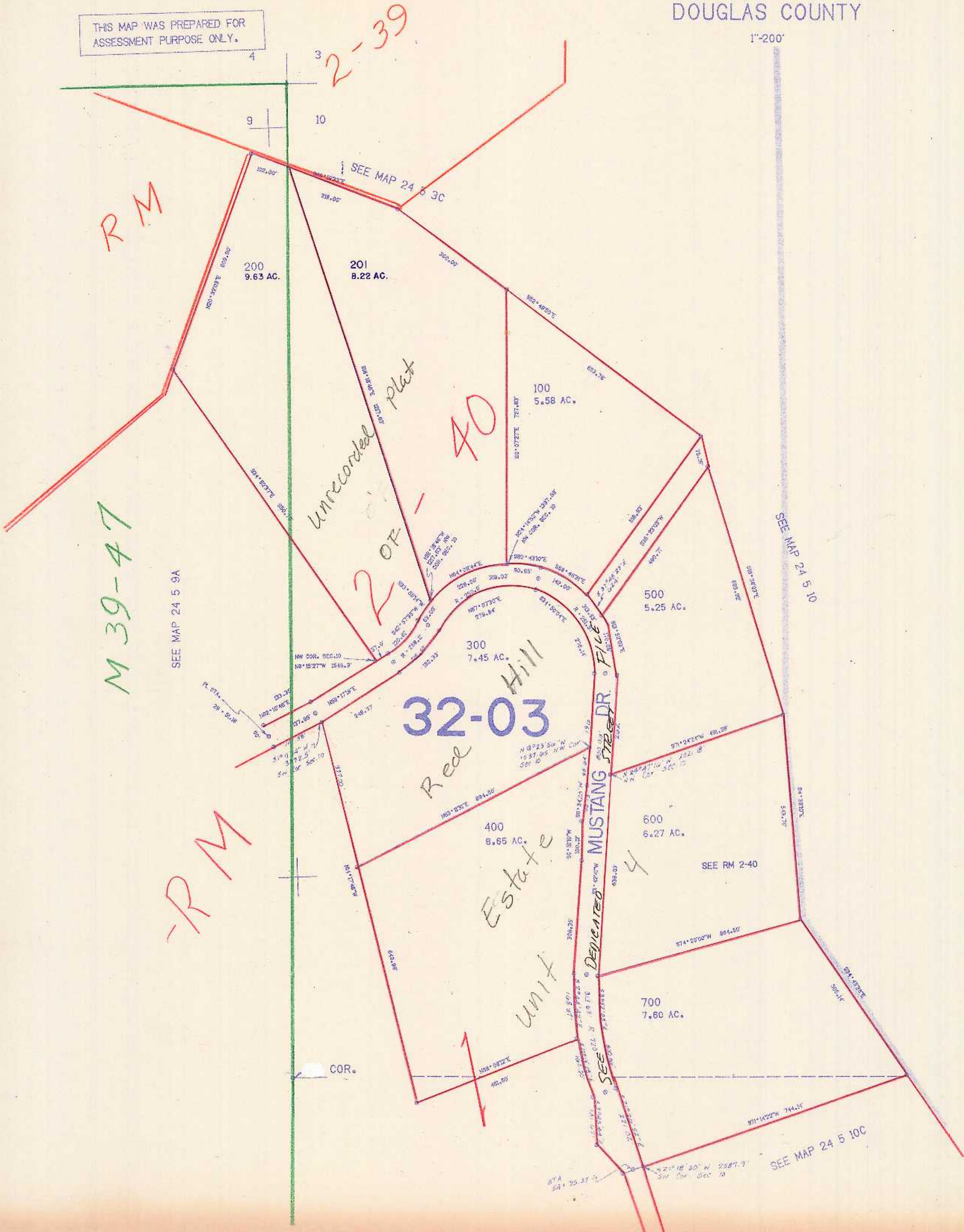
NW1/4 SEC.10 T.24S. R.5W. W.M.  
DOUGLAS COUNTY

24 5 10B

THIS MAP WAS PREPARED FOR  
ASSESSMENT PURPOSE ONLY.

1"=200'

APPROX.  
COR.



680.000

APPROX.  
COR.

24 5 10B

CBM  
10-90