

THIS MAP WAS PREPARED FOR ASSESSMENT PURPOSE ONLY.

SEC.10 T.24S. R.5W. W.M. DOUGLAS COUNTY

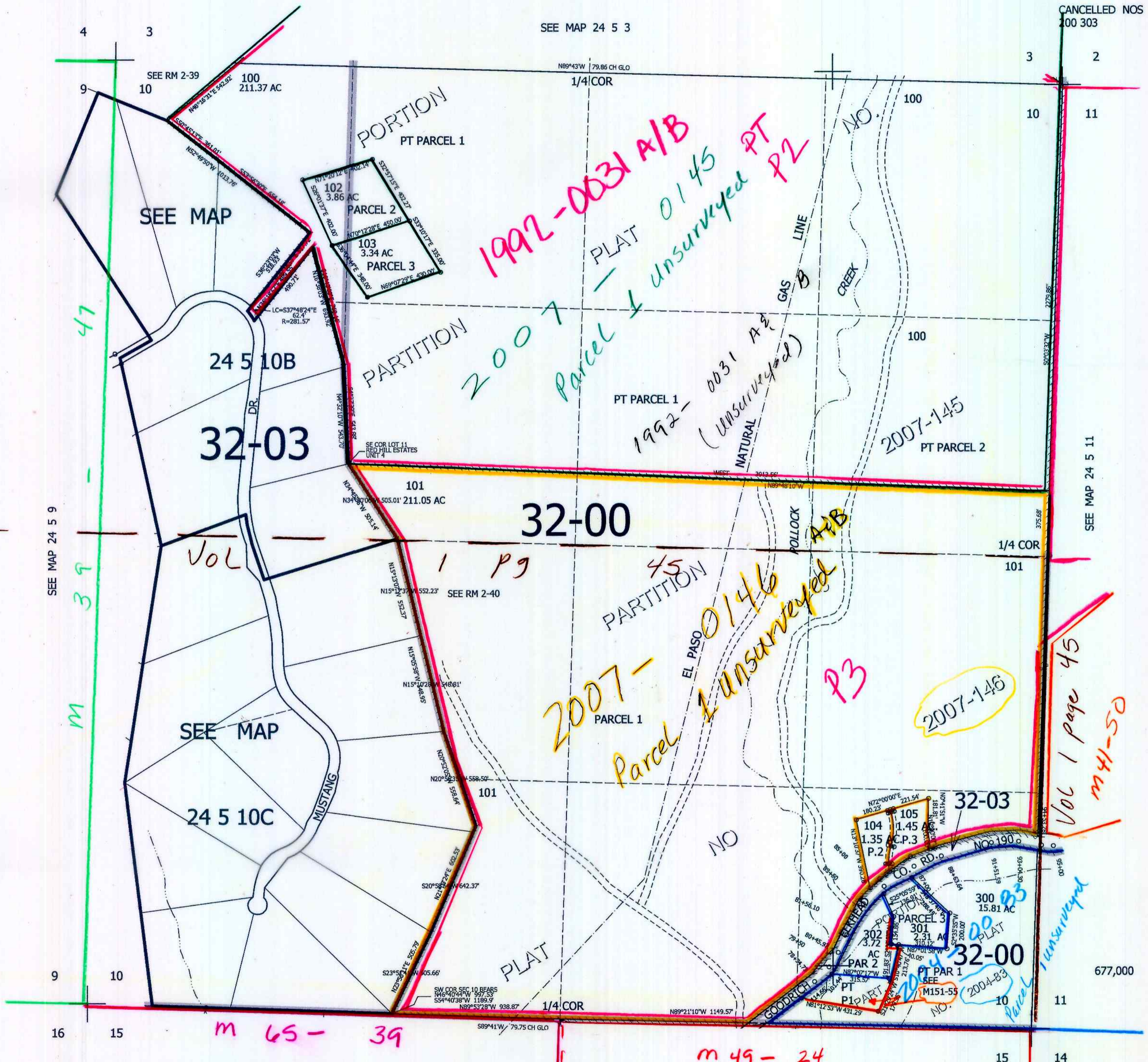
REVISED ON 12-12-07

24 5 10 & INDEX

1" = 400'

CANCELLED NOS 100 303

SEE MAP 24 5 3



SEE MAP 24 5 9

SEE MAP 24 5 11

SEE MAP 24 5 15

24 5 10 & INDEX

✓