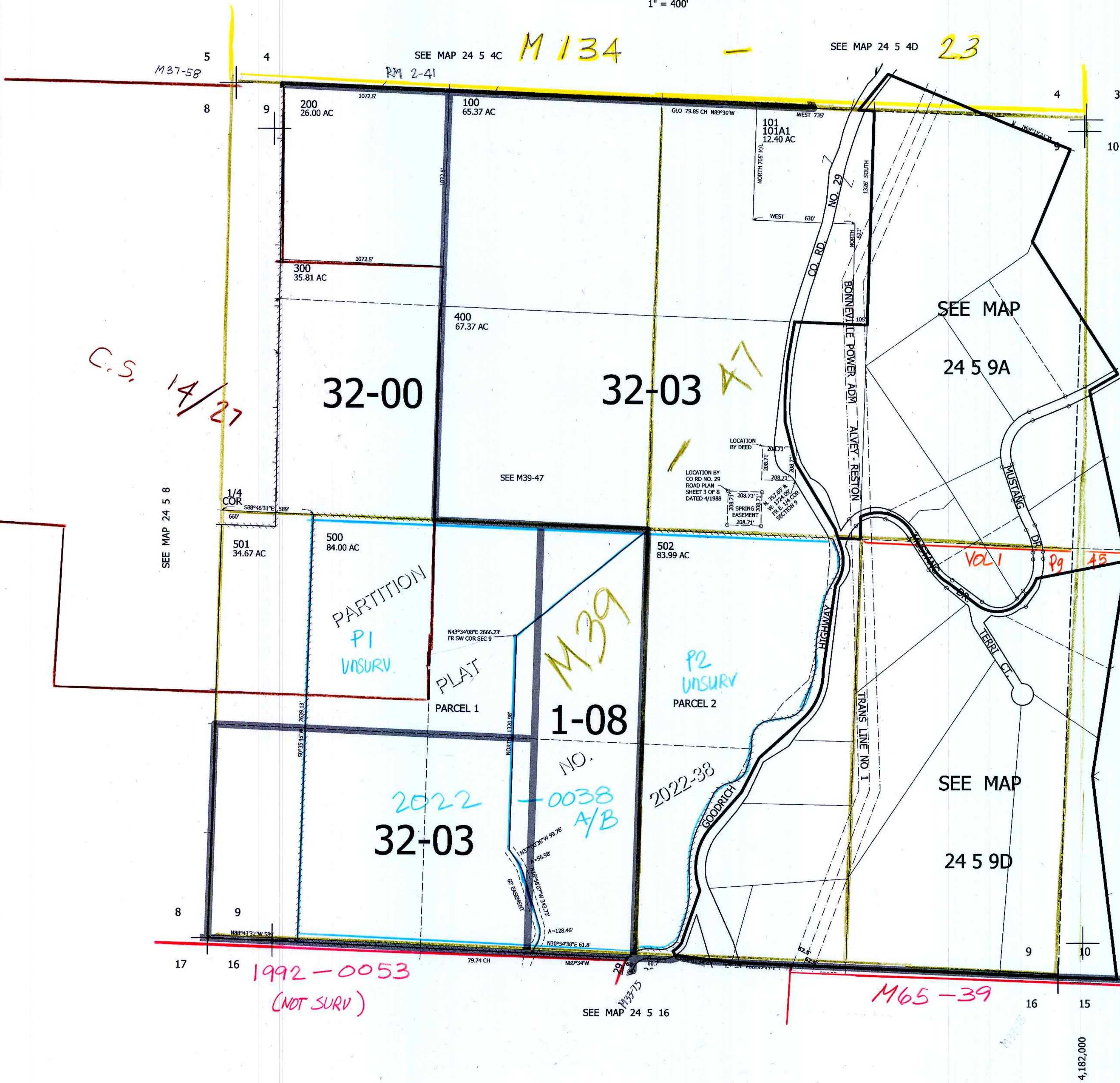


THIS MAP WAS PREPARED FOR ASSESSMENT PURPOSE ONLY.

SEC.9 T.24S. R.5W. W.M. DOUGLAS COUNTY
1" = 400'

REVISED ON 8-25-22

24 5 9 & INDEX



CANCELLED NOS 500M1 501M1

SEE MAP 24 5 10B

SEE MAP 24 5 10

SEE MAP 24 5 10C

677,000

24 5 9 & INDEX

4,182,000

8/2022