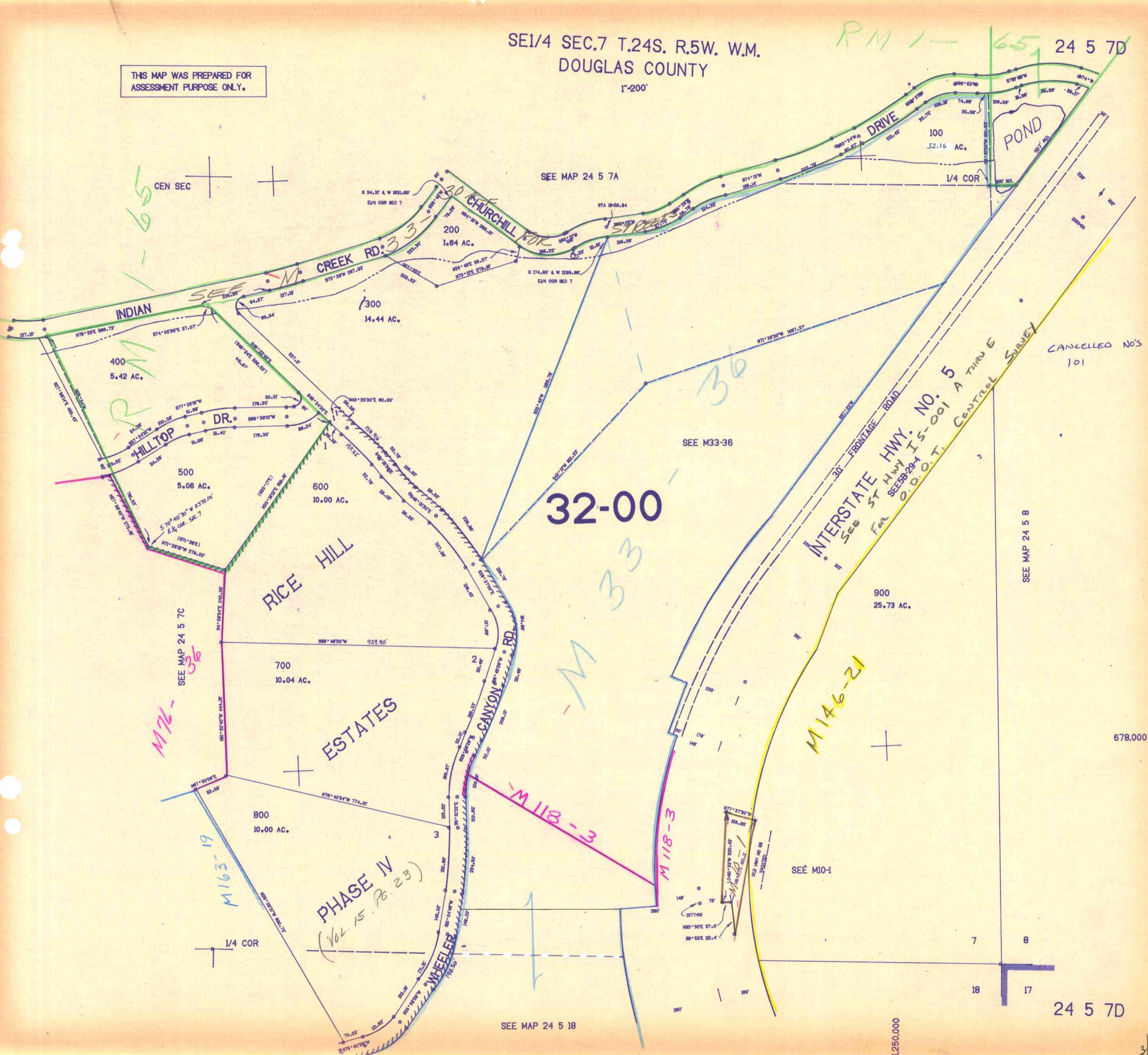
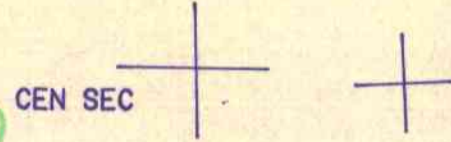


SE1/4 SEC.7 T.24S. R.5W. W.M.
DOUGLAS COUNTY

1"=200'

THIS MAP WAS PREPARED FOR
ASSESSMENT PURPOSE ONLY.

PM 1-65 24 5 7D



65

RM

32-00

36

M 33

M76-

M163-19

PHASE IV
(Vol. 15 Pg. 23)

M 118-3

M 118-3

M 146-21

CANCELLED NO'S
101

24 5 7D

1250.000

678.000

SEE MAP 24 5 7C

SEE MAP 24 5 7A

SEE M33-36

SEE MAP 24 5 8

SEE MAP 24 5 18

SEE M10-1