

THIS MAP WAS PREPARED FOR ASSESSMENT PURPOSE ONLY.

NE1/4 SEC.7 T.24S. R.5W. W.M. DOUGLAS COUNTY

1" = 200'

REVISED ON 6-27-08

24 5 7A

1990

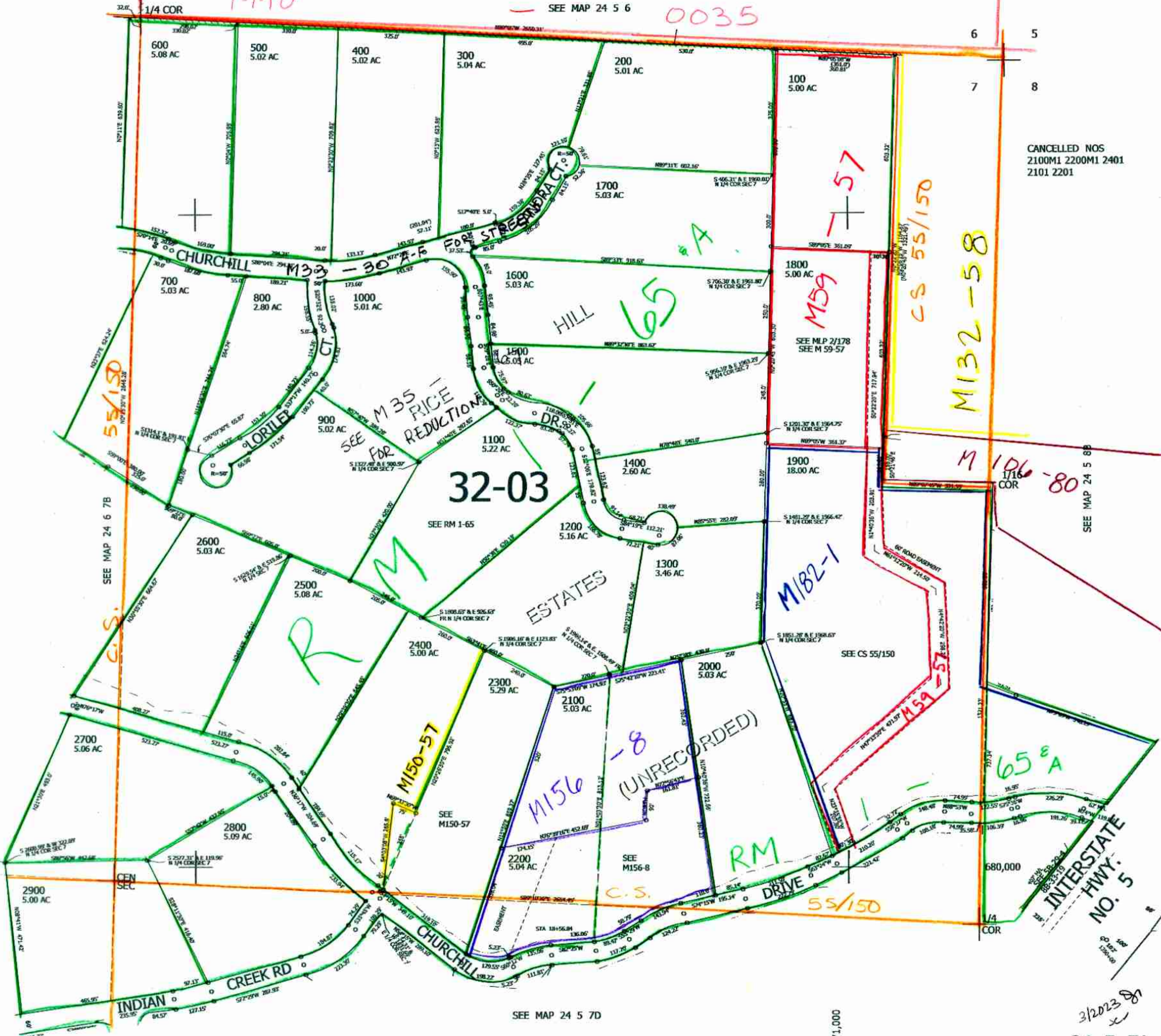
SEE MAP 24 5 6

0035

6 5

7 8

CANCELLED NOS 2100M1 2200M1 2401 2101 2201



SEE MAP 24 5 7D

4,171,000

3/2023

24 5 7A