

SW1/4 SEC.4 T.24S. R.5W. W.M.
DOUGLAS COUNTY

24 5 4C

THIS MAP WAS PREPARED FOR
ASSESSMENT PURPOSE ONLY.

1"=200'

APPROX
1/4 COR

APPROX
CEN SEC

M 1 3 4 - 2 3

SEE MAP 24 5 5

UNRECORDED
M 146

PLAT
10²⁰

RRM HILL

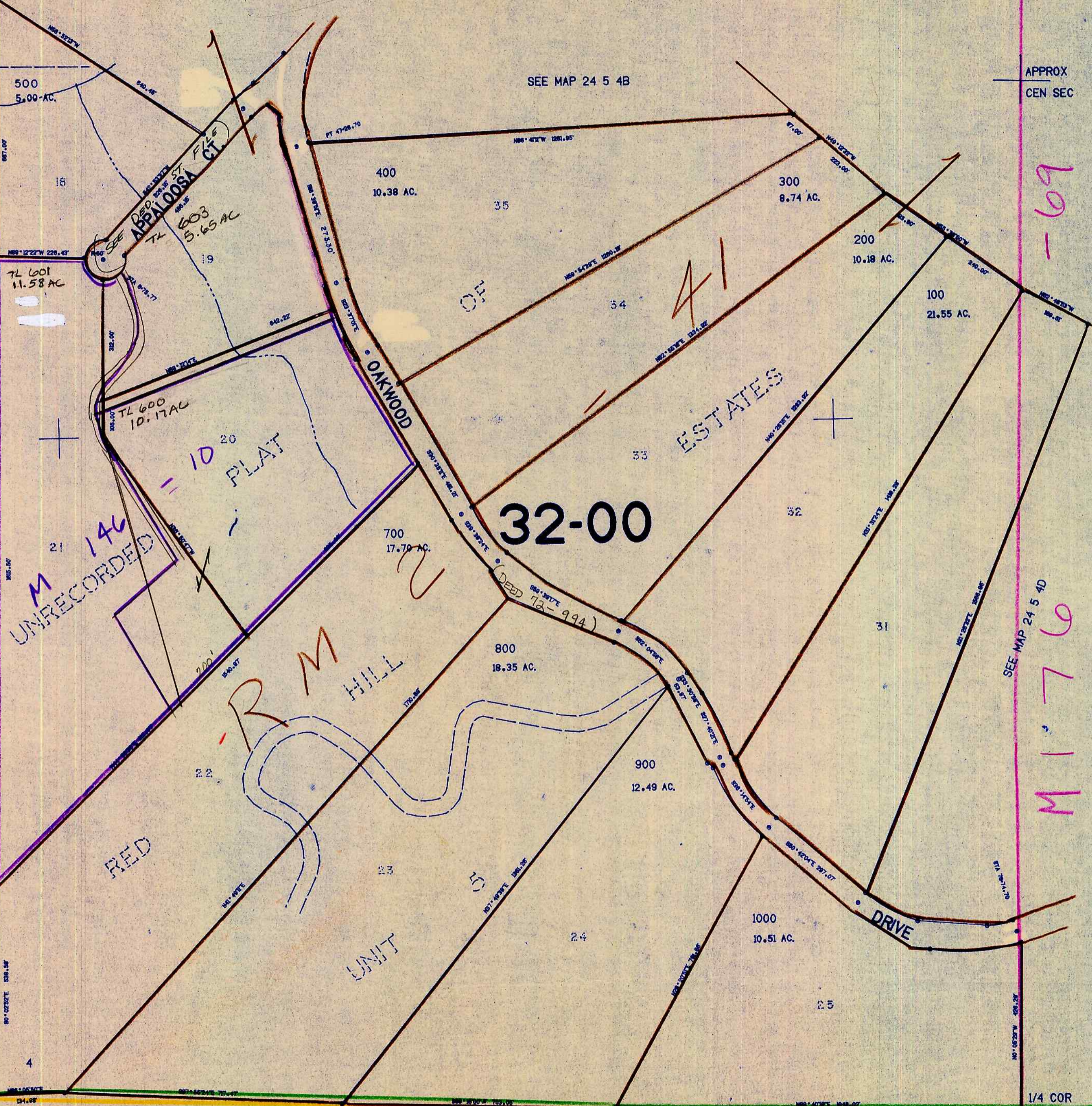
RED

UNIT

32-00

ESTATES

DRIVE



500
5.00-AC.

TL 601
11.58 AC

TL 600
10.17 AC

TL 603
5.65 AC

400
10.38 AC.

300
8.74 AC.

200
10.18 AC.

100
21.55 AC.

700
17.70 AC.

800
18.35 AC.

900
12.49 AC.

1000
10.51 AC.

SEE MAP 24 5 4B

SEE MAP 24 5 4D

SEE MAP 24 5 8

M 39 - 47
- 2 3

69

M 176

684,000

1,256,000

24 5 4C

1/8 2/8