

THIS MAP WAS PREPARED FOR ASSESSMENT PURPOSE ONLY.

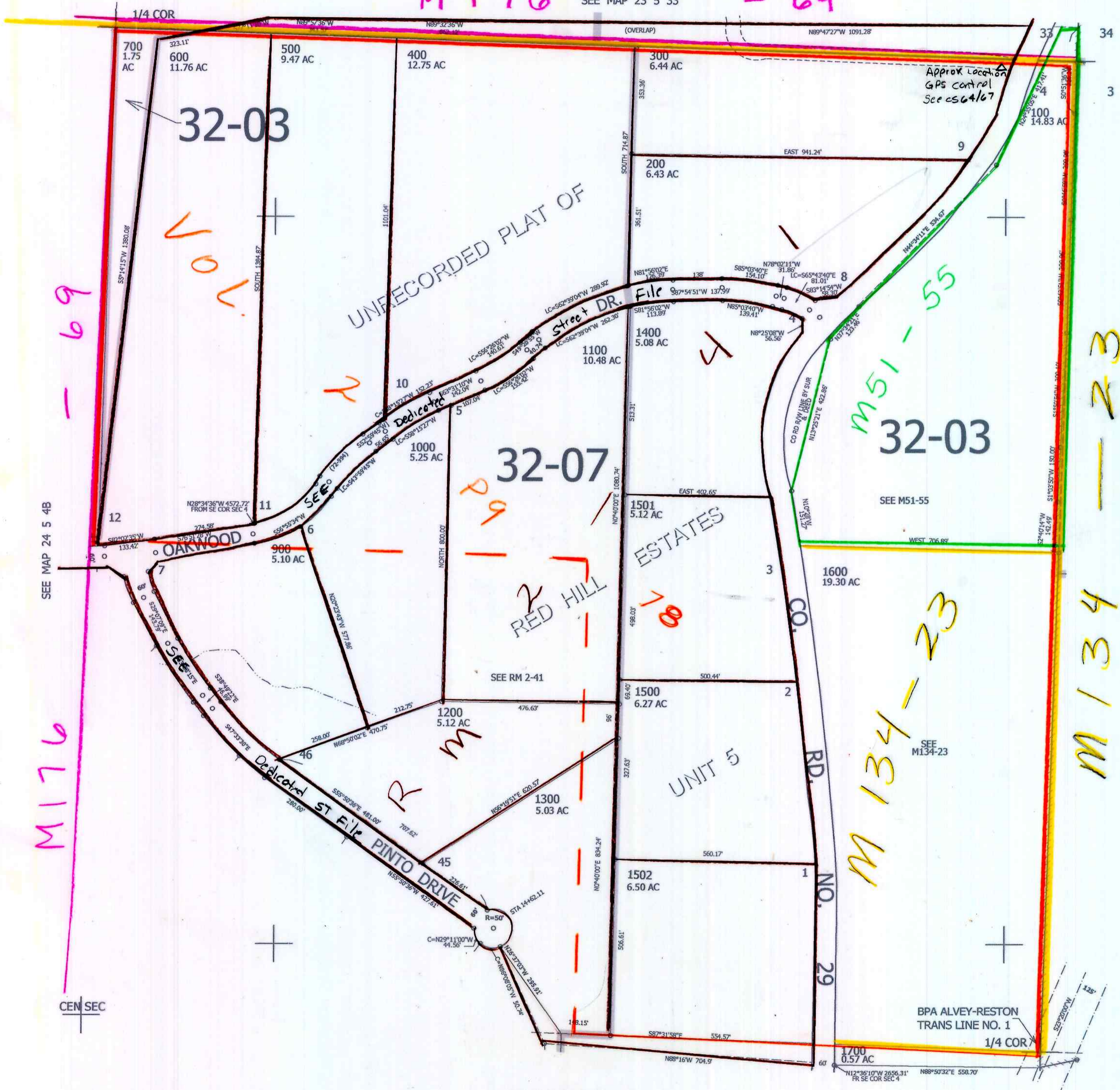
NE1/4 SEC.4 T.24S. R.5W. W.M. DOUGLAS COUNTY

REVISED ON 7-27-12

24 5 4A

1" = 200'

M 176 SEE MAP 23 5 33 - 69



CANCELLED NOS 800

M 176 - 69

M 176

M 134-23

M 134 - 23

SEE MAP 24 5 4B

SEE MAP 24 5 3

SEE MAP 24 5 4D

4,180,000

685,000

cm 8/2/12 JCV

24 5 4A