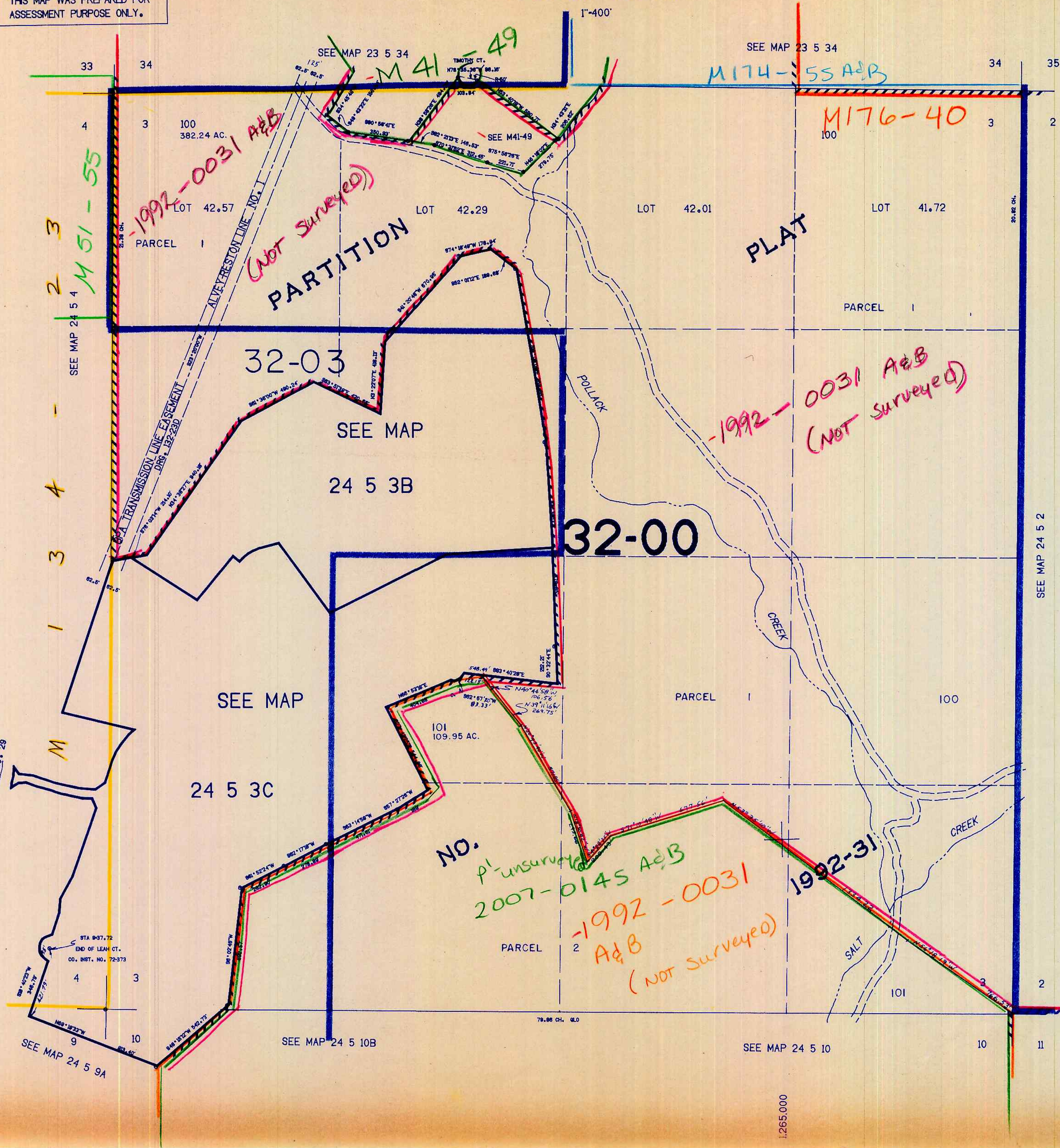


SECTION 3 T.24S. R.5W. W.M.
DOUGLAS COUNTY

REVISED ON
5-12-92

24 5 3
& INDEX

THIS MAP WAS PREPARED FOR
ASSESSMENT PURPOSE ONLY.



CANCELLED NO.S
200
201
300

683.000

24 5 3
& INDEX

10/9/92