

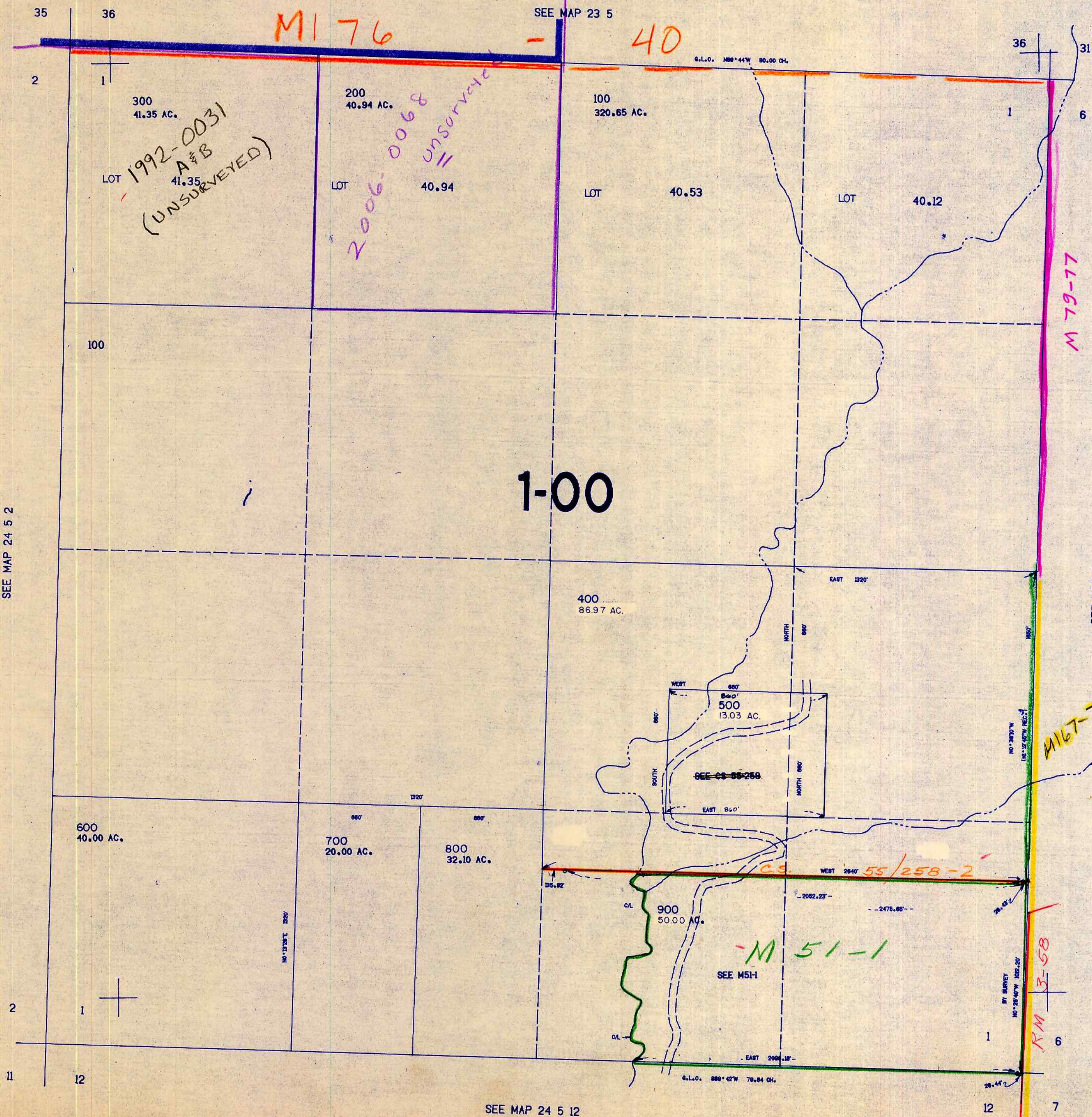
THIS MAP WAS PREPARED FOR ASSESSMENT PURPOSE ONLY.

SECTION 1 T.24S. R.5W. W.M. DOUGLAS COUNTY

24 5 1

1"=400'

1,277,000



SEE MAP 24 5 2

SEE MAP 23 5

SEE MAP 24 4 6

- M 96-68
- M 53-53
- M 52-3

SEE MAP 24 5 12

682,000

M 57-17

24 5 1