

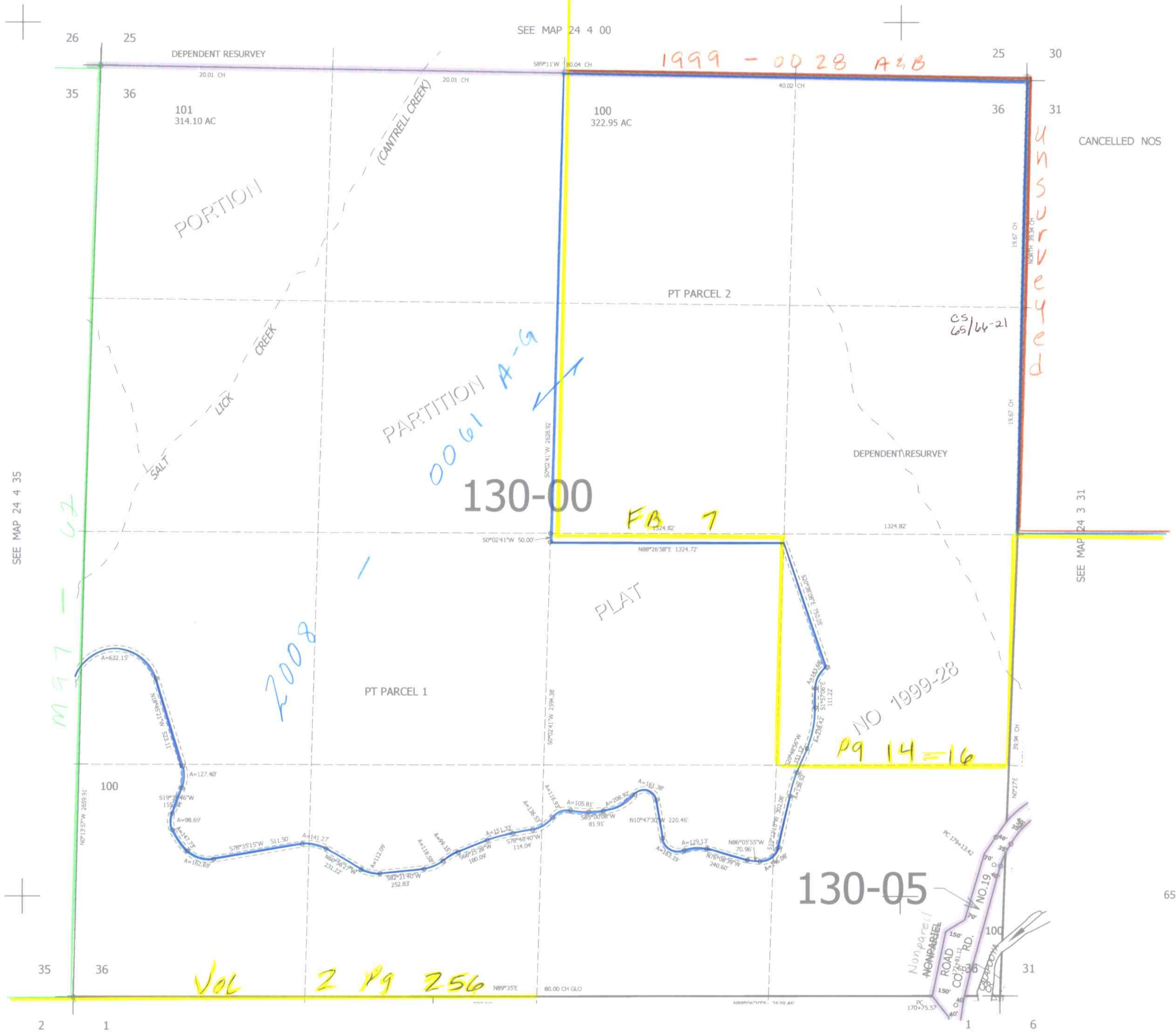
THIS MAP WAS PREPARED FOR ASSESSMENT PURPOSE ONLY.

SEC.36 T.24S. R.4W. W.M.
DOUGLAS COUNTY

REVISED ON
12-2-08

24 4 36

1" = 400'



CANCELLED NOS

SEE MAP 24 4 35

SEE MAP 24 3 31

SEE MAP 25 4 1

4,228,000

cm
12/23/08
24 4 36