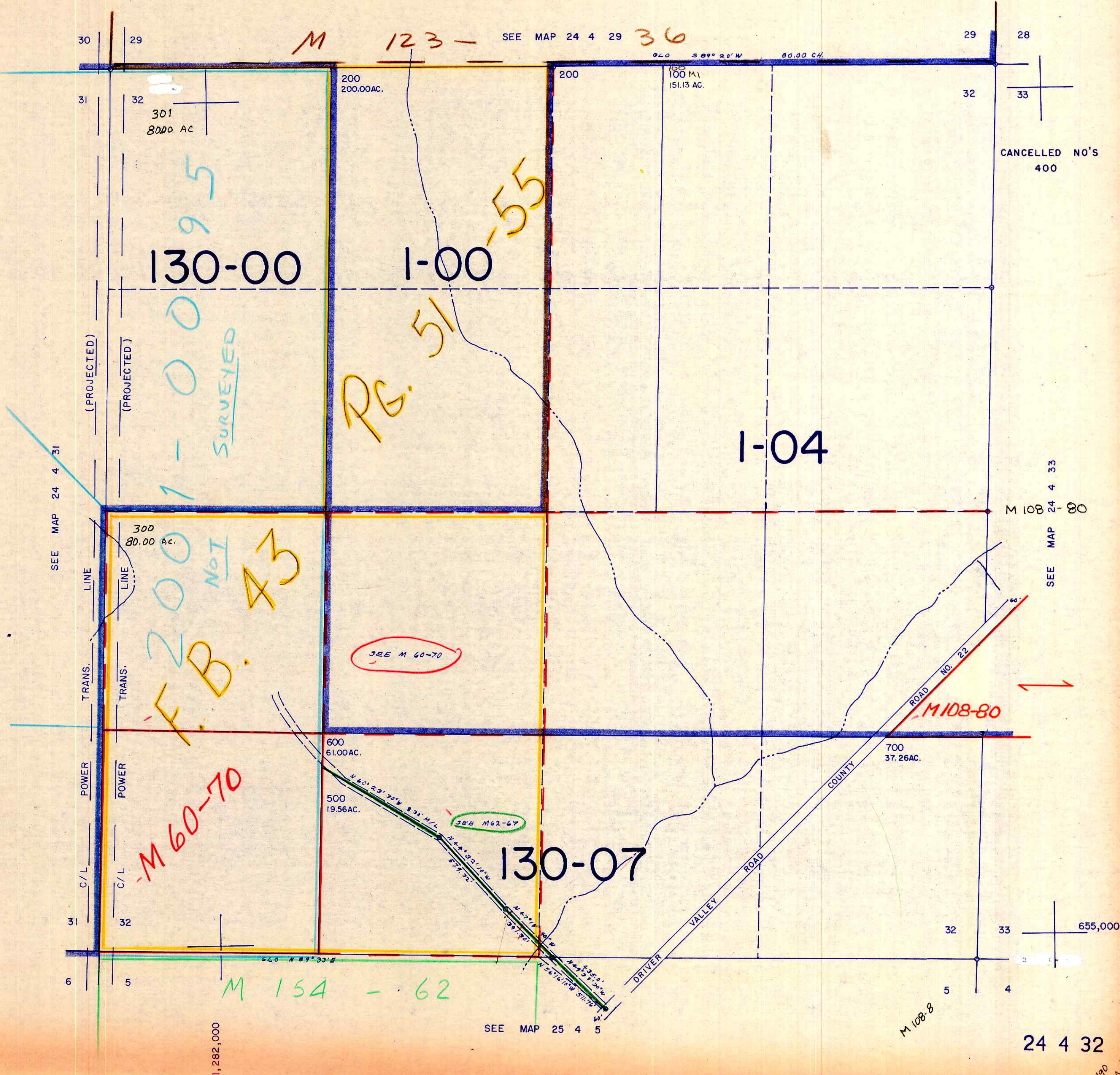


SECTION 32 T.24S. R.4W. W.M.
DOUGLAS COUNTY

24 4 32

THIS MAP WAS PREPARED FOR
ASSESSMENT PURPOSE ONLY.

1"=400'



CANCELLED NO'S
400

SEE MAP 24 4 33
M 108 24 4 30

M 108-8

24 4 32

1190
cm