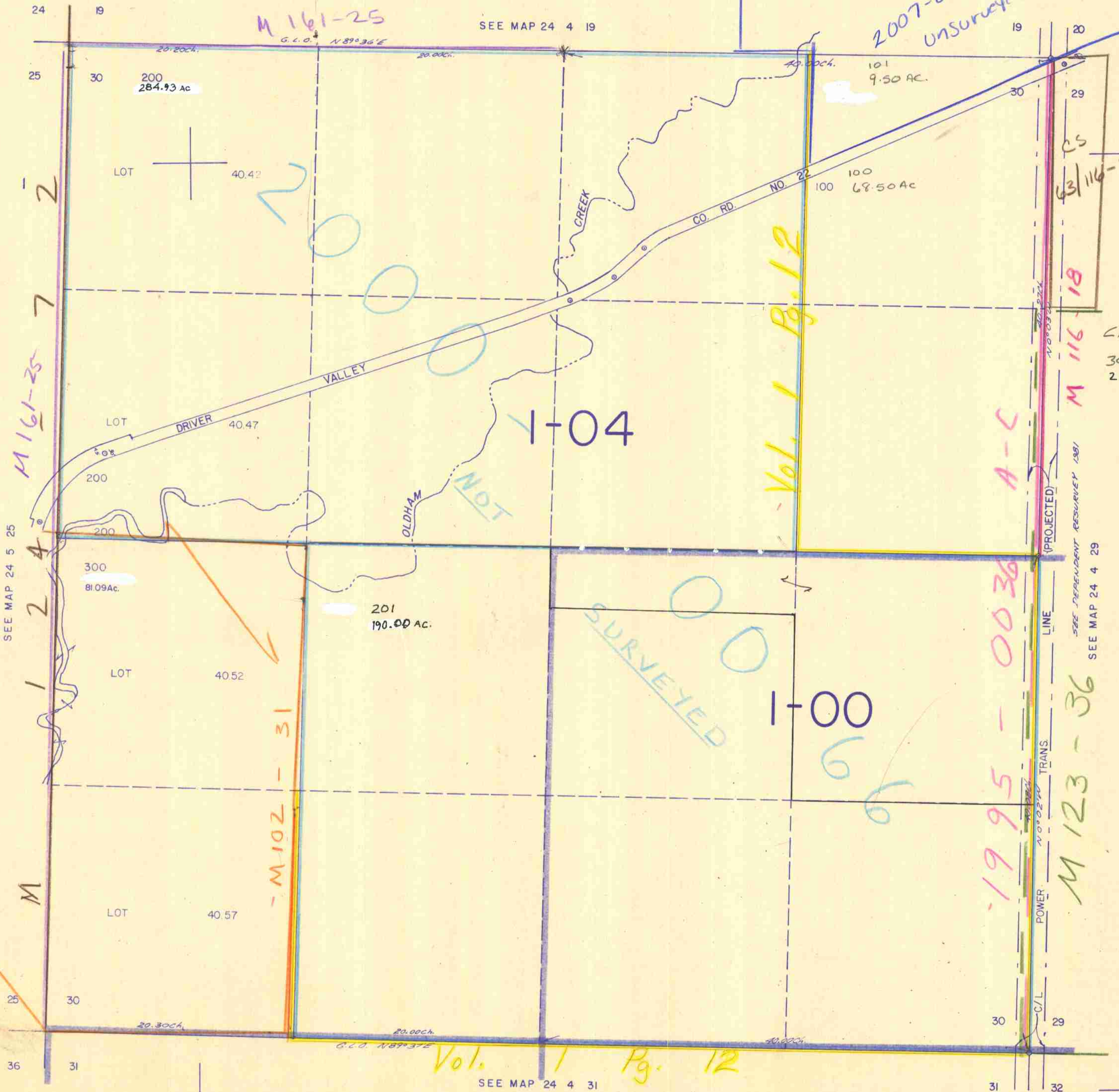


SECTION 30 T.24S. R.4W. W.M.
DOUGLAS COUNTY

24 4 30

THIS MAP WAS PREPARED FOR
ASSESSMENT PURPOSE ONLY.

1"=400'



2007-006240B
UNsurveyed

M 161-25

M 161-25

SEE MAP 24 4 19

Vol. 1 Pg. 12

1995-0036

M 123-36

1-04

1-00

SURVEYED

Vol. 1 Pg. 12

SEE MAP 24 4 31

CANCELLED Nos
300 M
202

24 4 30
1/84
68

660,000

1,282,000