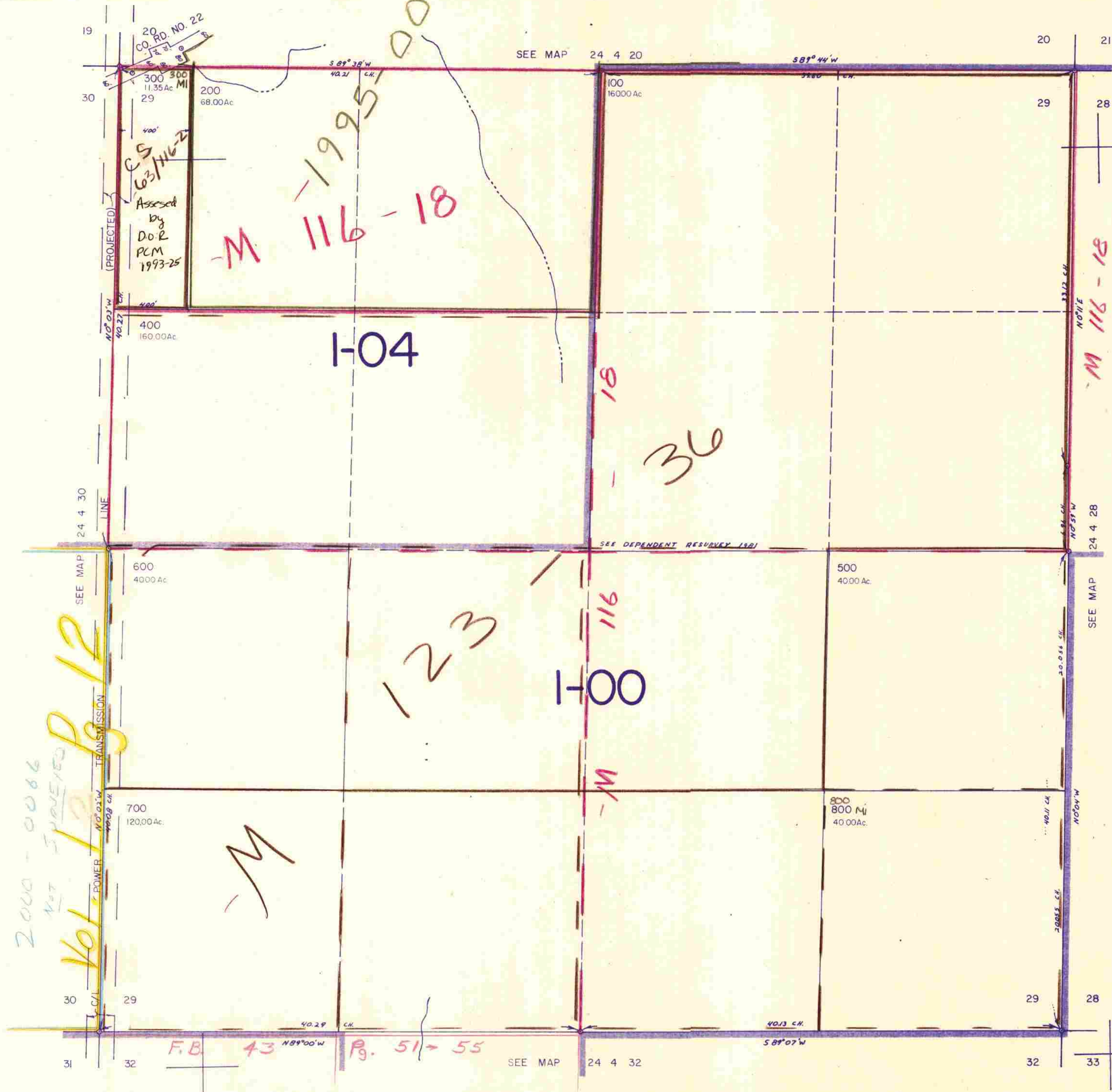


SECTION 29 T.24S. R. 4 W. W.M.
DOUGLAS COUNTY

24 4 29

THIS MAP WAS PREPARED FOR
ASSESSMENT PURPOSE ONLY.

1"=400'



2000-0066
NOT SURVEYED
Vol. 12 Pg. 12

F.B. 43 Pg. 51-55

24 4 29

1/84

1,287,000