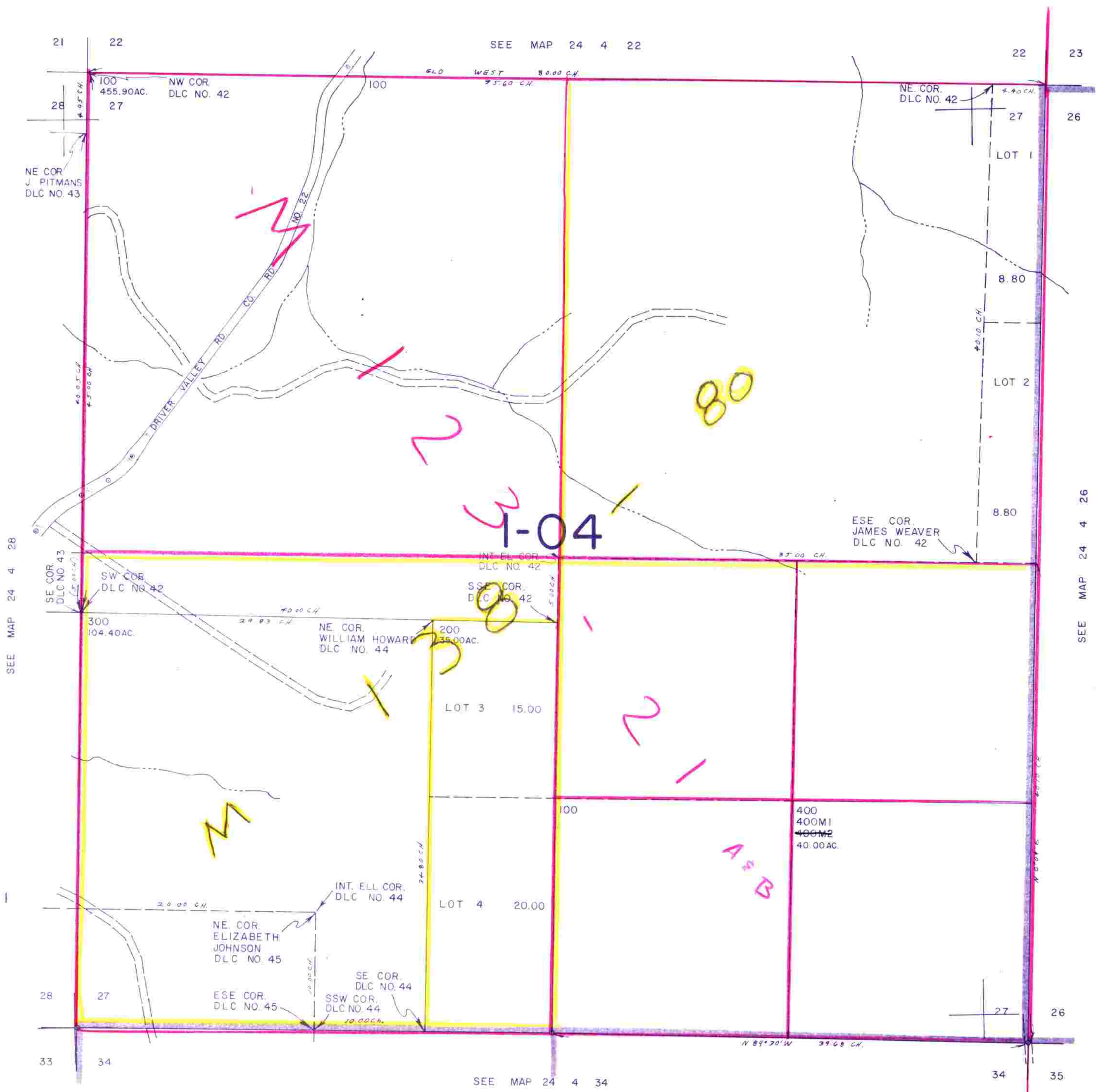


SECTION 27 T.24S. R.4W. W.M.
DOUGLAS COUNTY

24 4 27

THIS MAP WAS PREPARED FOR
ASSESSMENT PURPOSE ONLY.

1"=400'



SEE MAP 24 4 26

SEE MAP 24 4 28

SEE MAP 24 4 34

660,000

24 4 27

297,000

1/84 88