

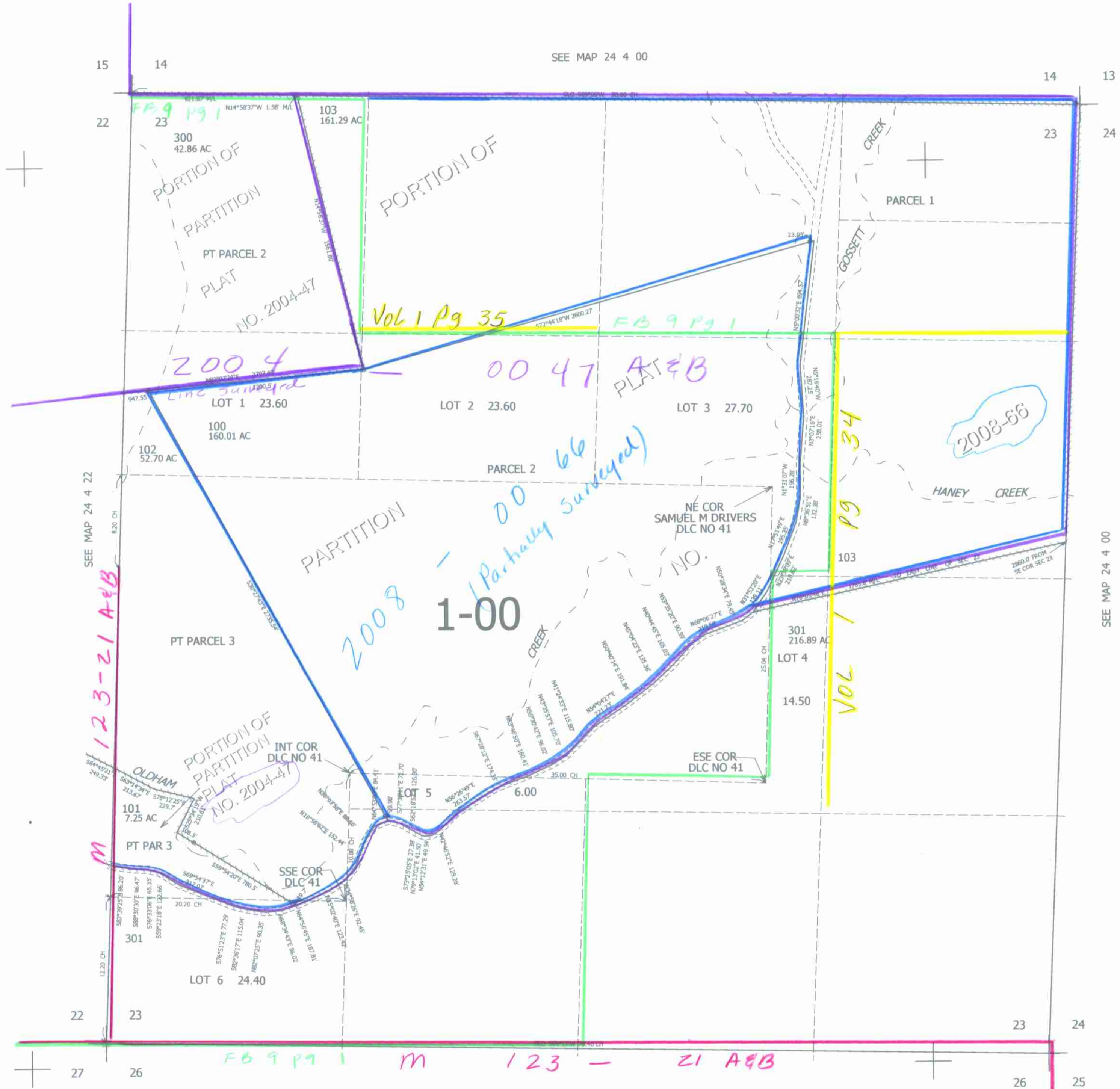
THIS MAP WAS PREPARED FOR ASSESSMENT PURPOSE ONLY.

SEC.23 T.24S. R.4W. W.M.  
DOUGLAS COUNTY  
1" = 400'

REVISED ON  
11-24-08

24 4 23

CANCELLED NOS  
302 303 401  
402 403 200  
304 400



SEE MAP 24 4 22

SEE MAP 24 4 00

SEE MAP 24 4 26

4,223,000

Om  
12/12/08  
665,000  
JC

24 4 23