

SEC.22 T.24S. R.4W. W.M.
DOUGLAS COUNTY

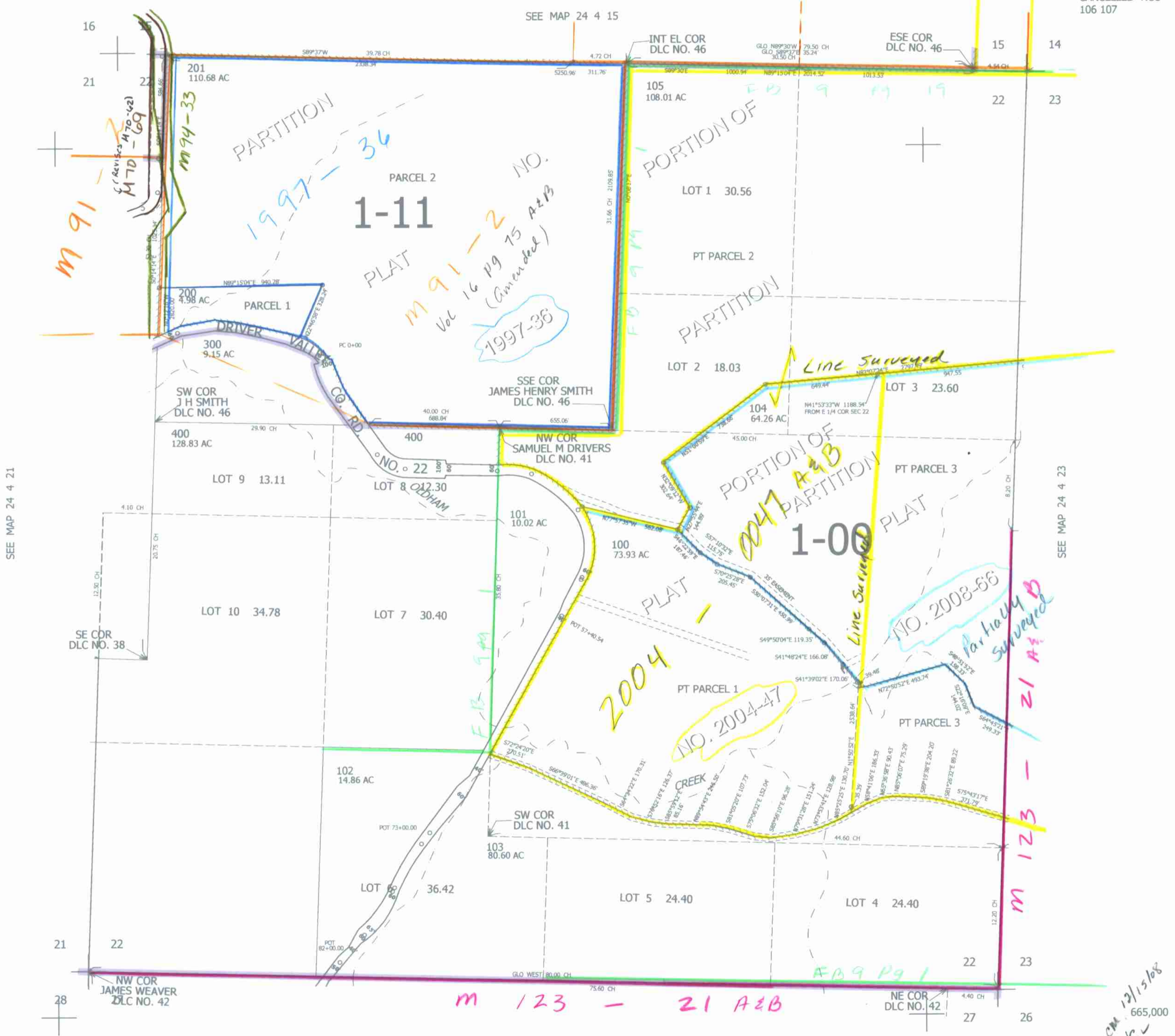
REVISED ON
11-24-08

24 4 22

THIS MAP WAS PREPARED FOR
ASSESSMENT PURPOSE ONLY.

1" = 400'

CANCELLED NOS
106 107



SEE MAP 24 4 21

SEE MAP 24 4 23

SEE MAP 24 4 27

4,218,000

24 4 22

CM 12/15/08
JC