

SECTION 18 T.24S. R.4W. W.M.  
DOUGLAS COUNTY

REVISED ON  
4-11-94

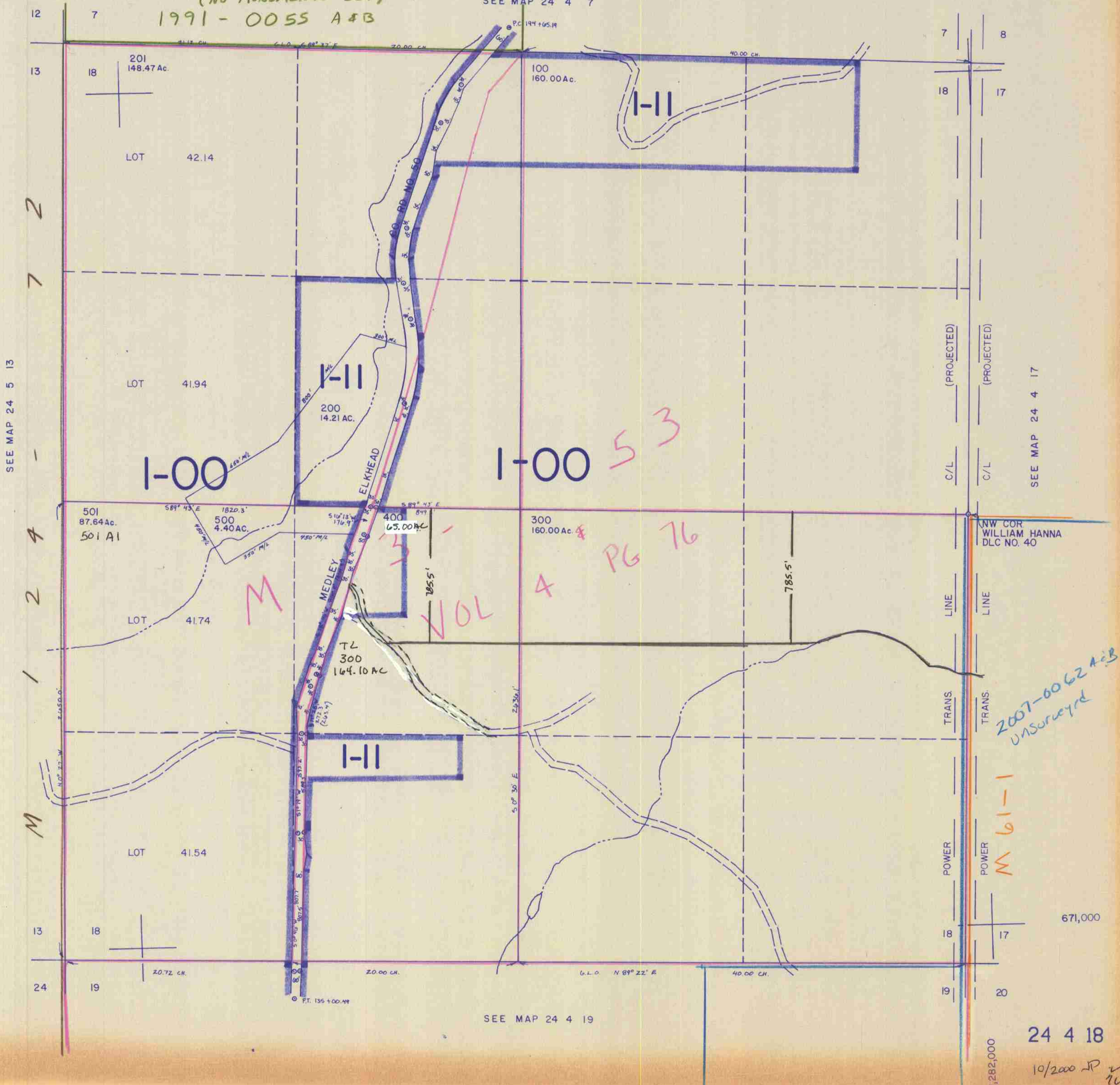
24 4 18

THIS MAP WAS PREPARED FOR  
ASSESSMENT PURPOSE ONLY.

1"=400'

(NO MONUMENTS SET)  
1991-0055 A+B

SEE MAP 24 4 7



24 4 18

10/200 JP v  
TW