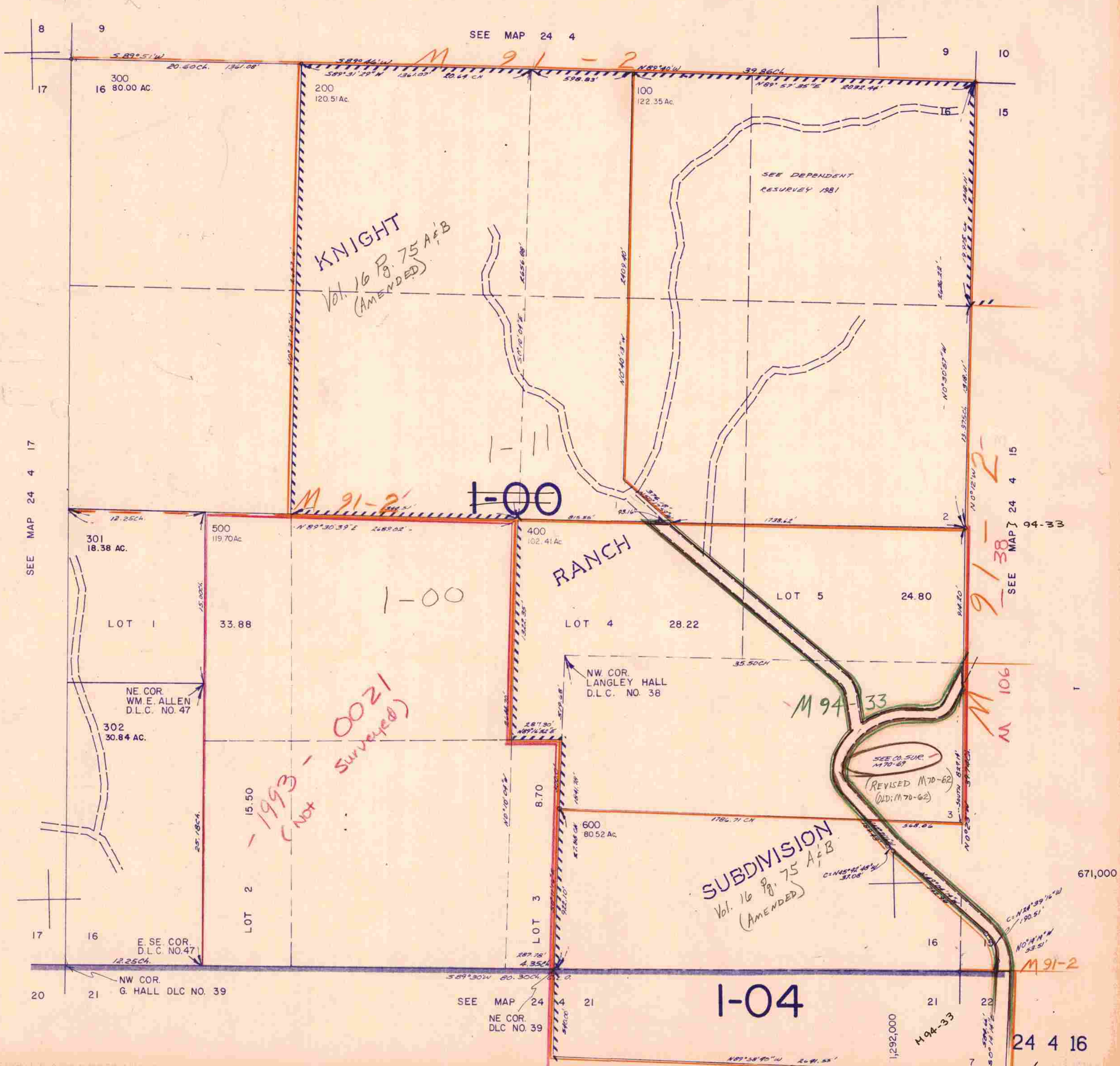


SECTION 16 T.24S. R.4W. W.M.  
DOUGLAS COUNTY

24 4 16

THIS MAP WAS PREPARED FOR  
ASSESSMENT PURPOSE ONLY.

1"=400'



SEE MAP 24 4 17

SEE MAP 24 4

SEE MAP 24 4 15

SEE MAP 24 4 33

SEE MAP 24  
NE COR.  
DLC NO. 39

24 4 16

1/84 BS

1993 (not surveyed) 0021

1-00

1-00

SUBDIVISION  
Vol. 16 Pg. 75 A & B  
(AMENDED)

1-04

M 94-33

M 106

M 91-2

M 91-2

M 94-33

M 91-2

SEE DEPENDENT  
RESURVEY 1981

SEE CO. SUR.  
M 70-67  
REVISED M 70-62  
(OLD: M 70-62)

1,292,000

671,000