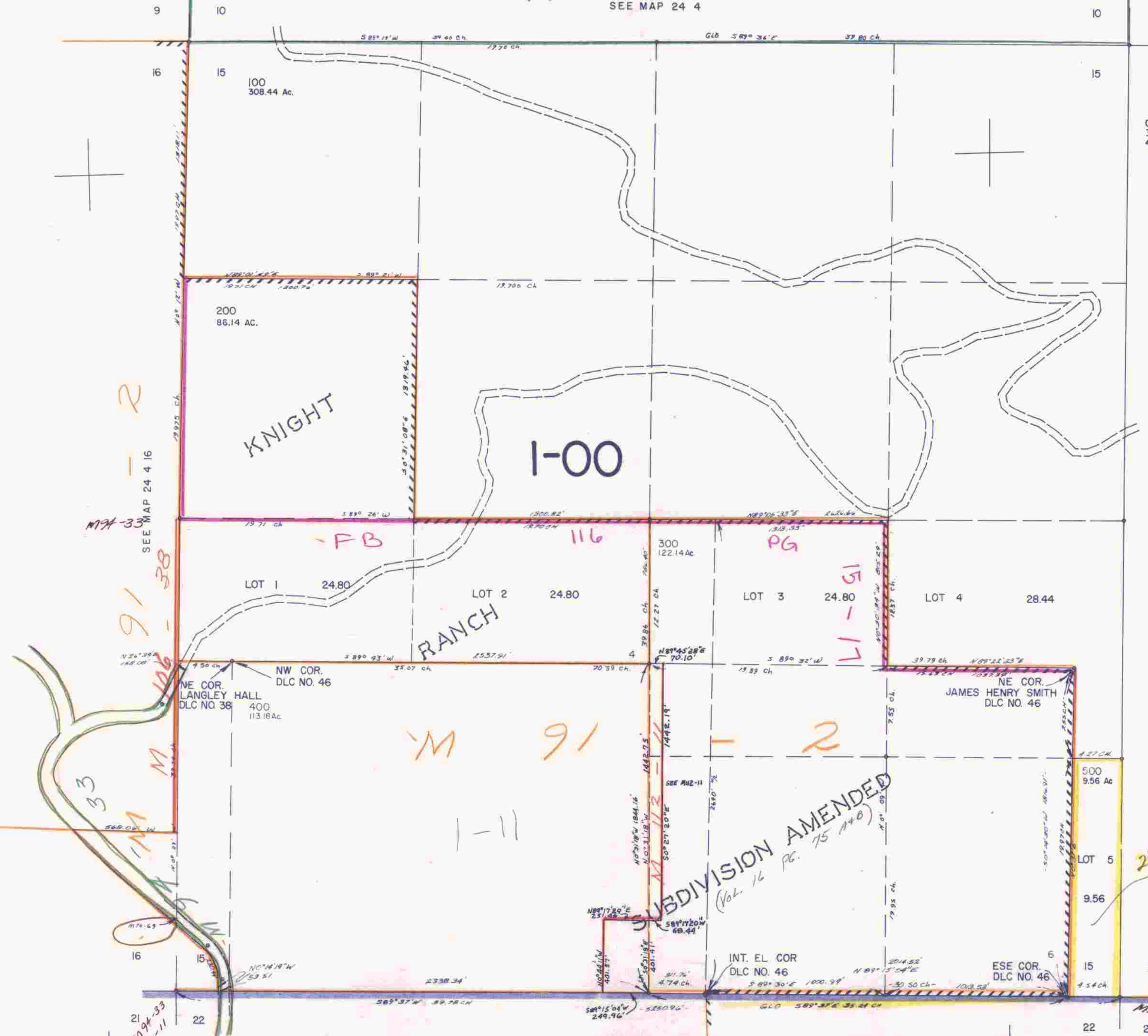


SECTION 15 T.24S. R.4W. W.M.
DOUGLAS COUNTY

THIS MAP WAS PREPARED FOR
ASSESSMENT PURPOSE ONLY.

1"=400'
M 145-32
SEE MAP 24 4



CANCELLED NOS
301
401

SEE MAP 24 4

SUBDIVISION AMENDED
(Vol. 16 Pg. 75 140)

2004-0047 A2B
UNINSURED

SEE MAP 24 4 22

670,000