

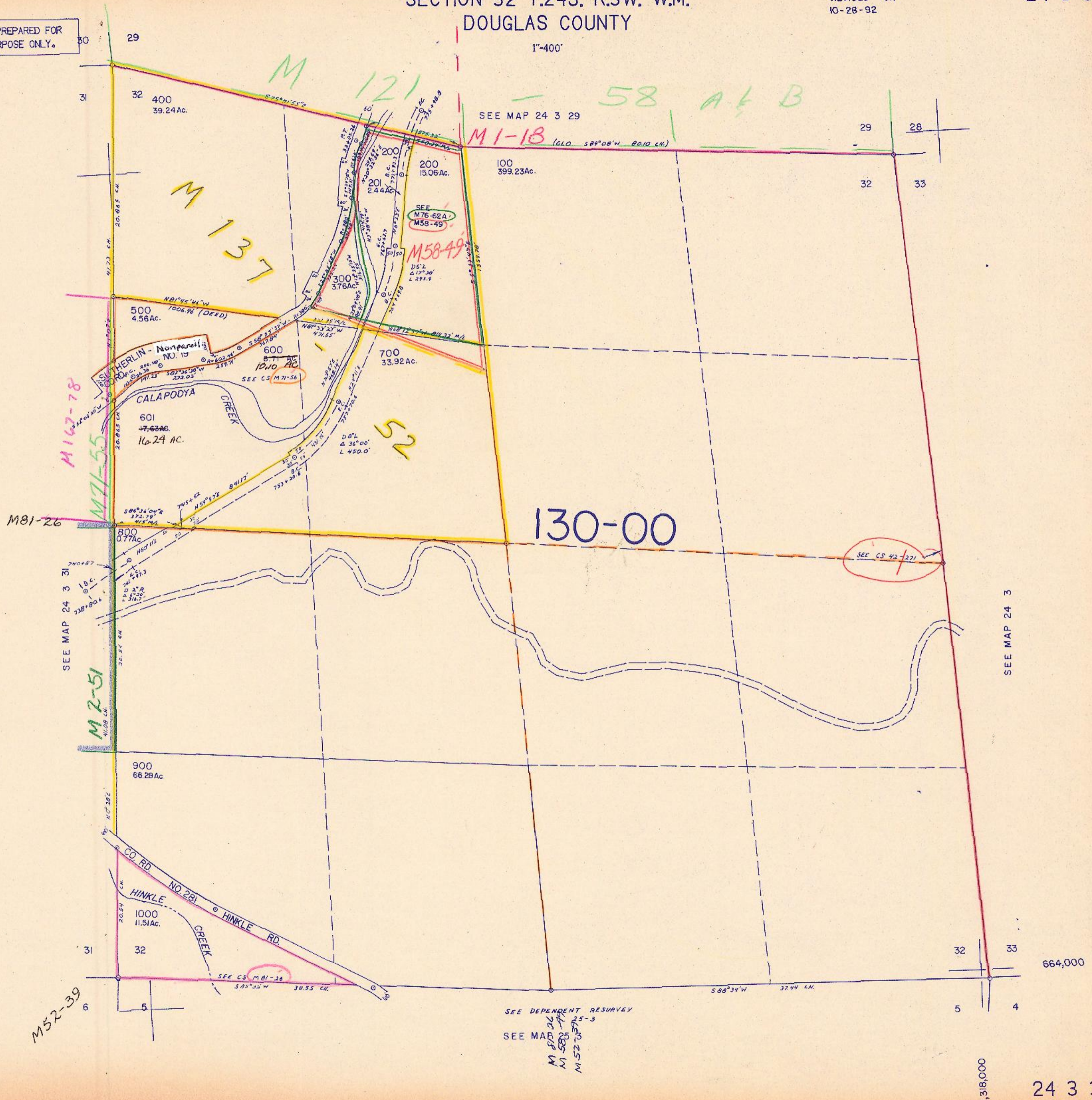
SECTION 32 T.24S. R.3W. W.M.
DOUGLAS COUNTY

REVISED ON
10-28-92

24 3 32

THIS MAP WAS PREPARED FOR
ASSESSMENT PURPOSE ONLY.

1"=400'



M167-78

M81-26

M2-51

M52-39

M 137

M 121

M 52

M1-18 (OLD 58° 08' W 80.10 CH.)

M58-49

130-00

SEE CS 42-271

SEE MAP 24 3 29

SEE MAP 24 3 31

SEE MAP 24 3

SEE DEPENDENT RESURVEY

SEE MAP 24 3 25-3
M 870-26
M 583-74
M 527-37

664,000

1,318,000

24 3 32

11/22/92