

SE1/4 SEC. 31 T.24S. R.3W. W.M.
DOUGLAS COUNTY

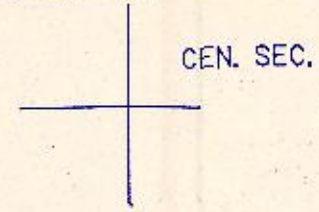
REVISED ON
5-10-96

24 3 31D

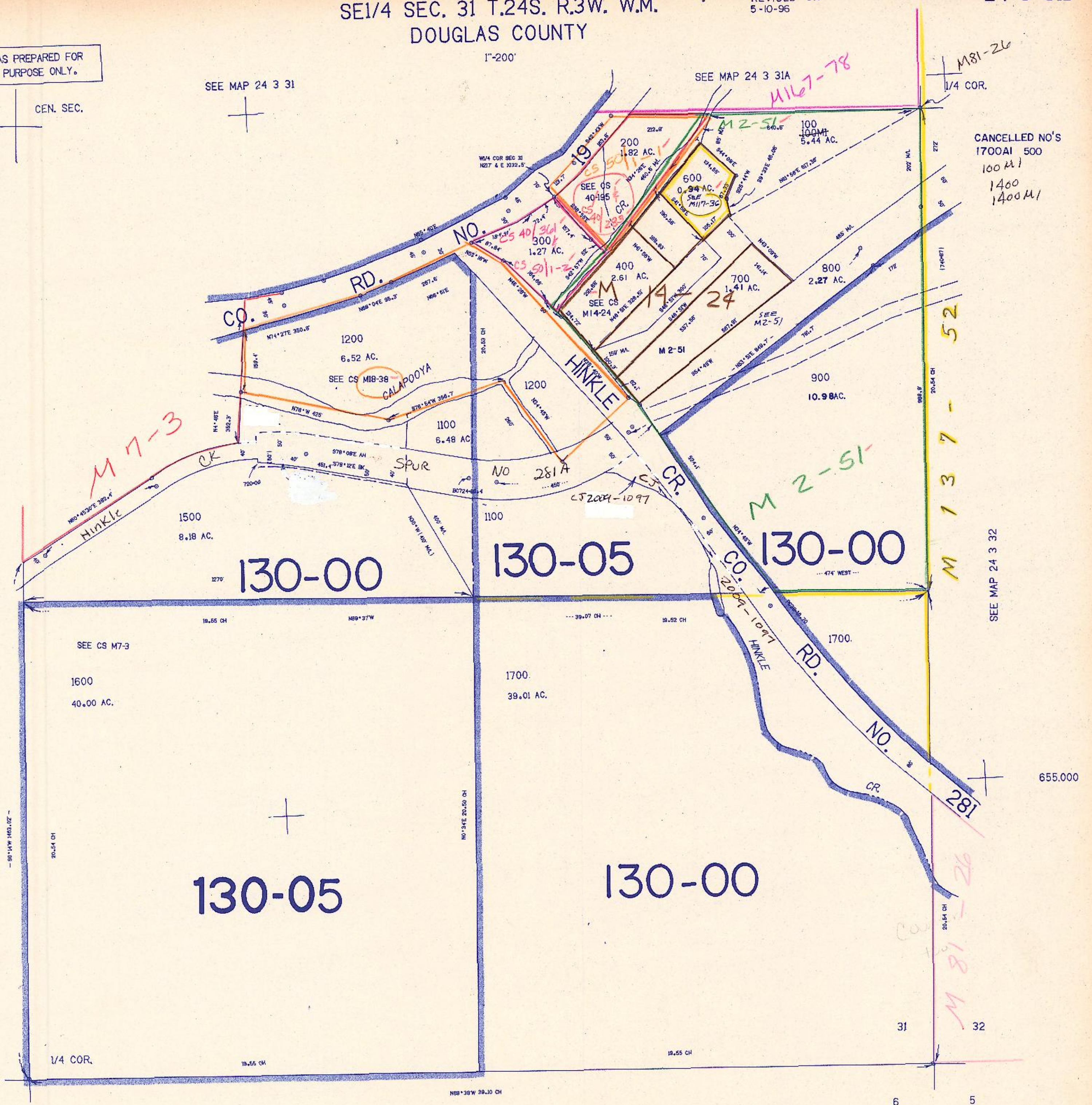
THIS MAP WAS PREPARED FOR
ASSESSMENT PURPOSE ONLY.

SEE MAP 24 3 31

SEE MAP 24 3 31A



CANCELLED NO'S
1700AI 500
100 M1
1400
1400 M1



SEE MAP 24 3 31

SEE MAP 24 3 32

130-05

130-05

130-00

130-00

1311.000

SEE MAP 25 3 6

24 3 31D

Handwritten signature or initials