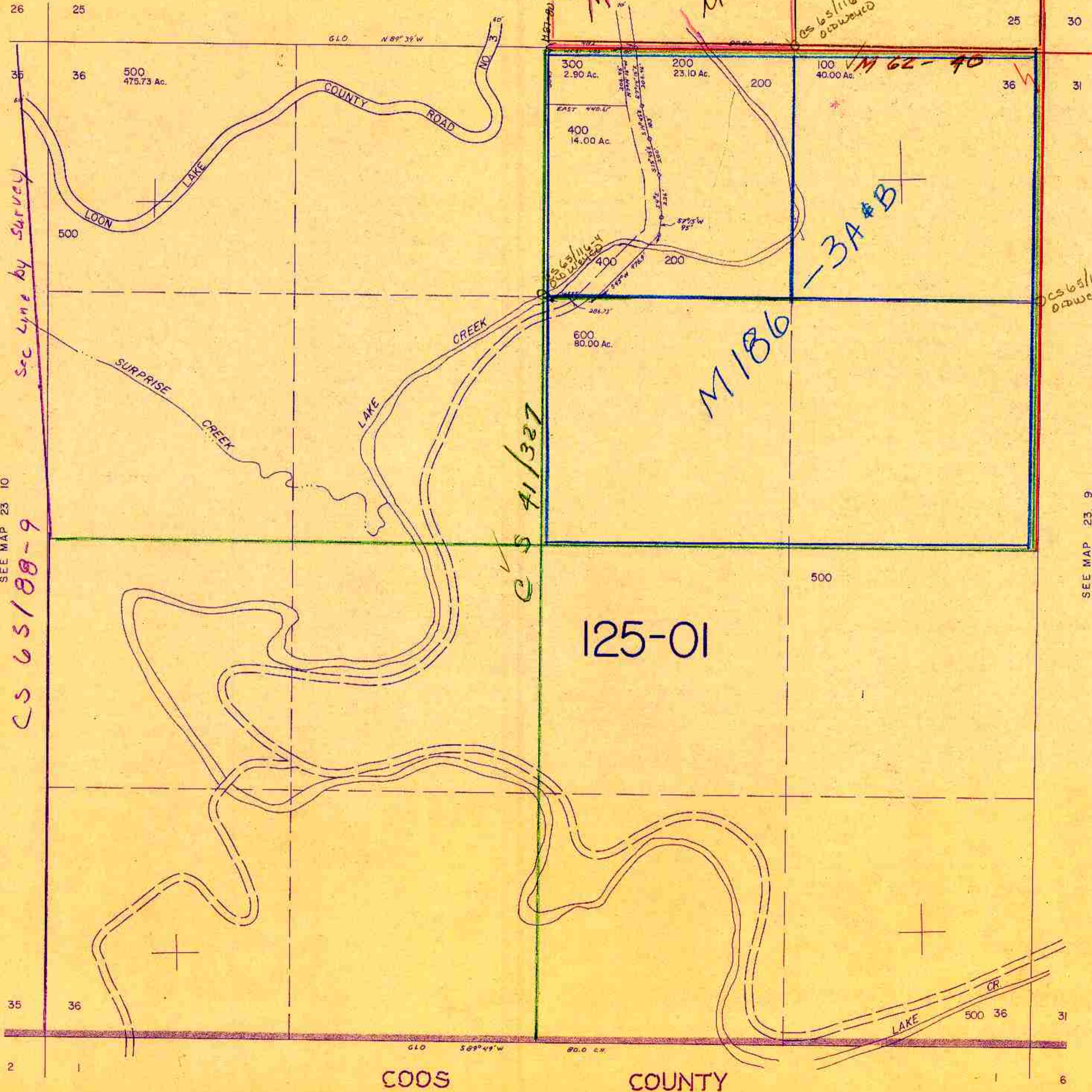


THIS MAP WAS PREPARED FOR
ASSESSMENT PURPOSE ONLY.

SECTION 36 T.23 S. R.10 W. W.M.
DOUGLAS COUNTY

23 10 36

1" = 400'



SEE MAP 23 10
CS 65/188-9

Sec Line by Survey

CS 41/327

125-01

M 146-70

M 126-31

M 62-40

M 186

3A & B

CS 65/116-4
OBSOLETE

SEE MAP 23 9

COOS

COUNTY

23 10 36

692,000

692,000

4/83/18