

SECTION 24 T.23S. R.10W. W.M.
DOUGLAS COUNTY

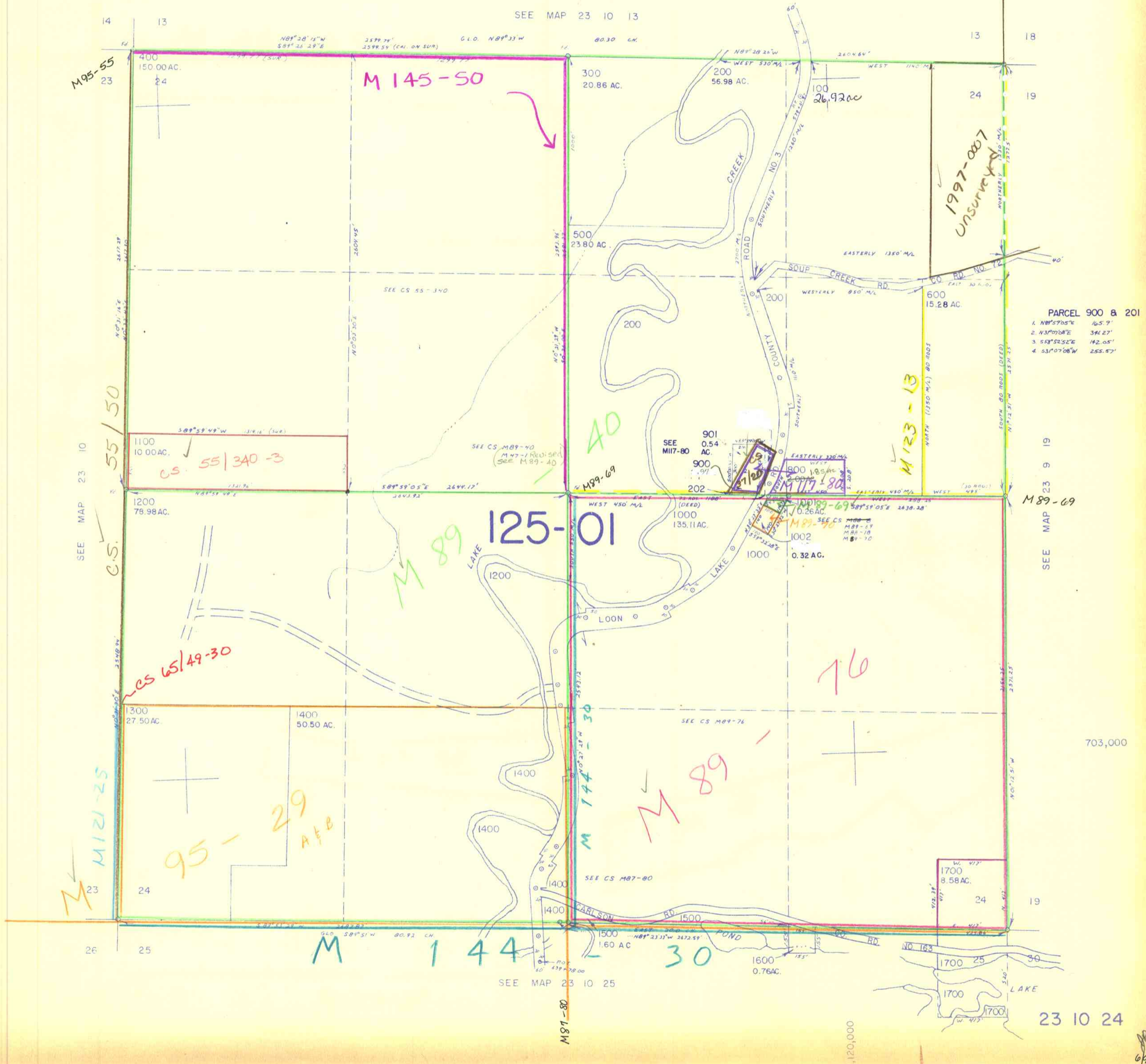
REVISED ON
6-20-94

23 10 24

THIS MAP WAS PREPARED FOR
ASSESSMENT PURPOSE ONLY.

1" = 400'

CANCELLED PARCEL NO'S
700



PARCEL 900 & 201

1. N89°59'05"E 165.7'
2. N39°07'08"E 346.27'
3. S58°52'52"E 142.05'
4. S31°07'08"W 255.57'

SEE MAP 23 10 13

SEE MAP 23 10 19

SEE MAP 23 10 25

23 10 24