

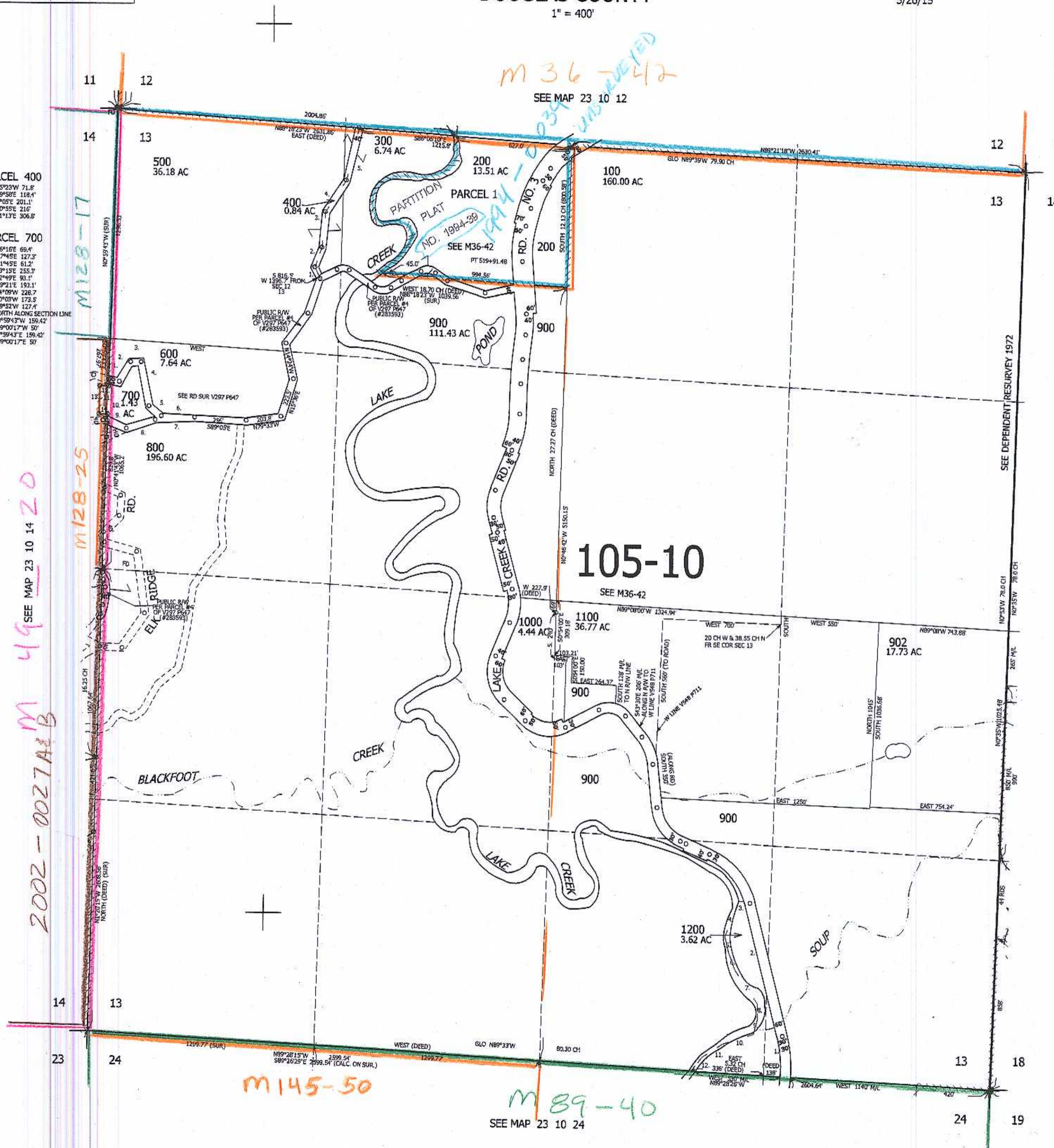
THIS MAP WAS PREPARED FOR ASSESSMENT PURPOSE ONLY.

SEC. 13 T.23S. R.10W. W.M. DOUGLAS COUNTY

REVISED ON 5/26/15

23 10 13

1" = 400'



M 36-42
UNRECORDED

2002-0027A+B
M 49
SEE MAP 23 10 14 20

M128-17

M128-25

M145-50

M 89-40
SEE MAP 23 10 24

- PARCEL 400
1. N83°23'W 71.8'
 2. N2°44'E 127.2'
 3. N81°42'E 61.2'
 4. S13°15'E 255.3'
 5. S52°49'E 93.1'
 6. N89°21'E 193.1'
 7. S84°09'W 228.7'
 8. S70°05'W 173.3'
 9. N69°52'W 127.4'
 10. NORTH ALONG SECTION LINE
 11. N0°59'43\"W 159.42'
 12. S89°00'17\"W 50'
 13. S0°39'43\"E 189.42'
 14. N89°00'17\"E 50'

- PARCEL 700
1. S76°16'E 69.4'
 2. N2°44'E 127.2'
 3. N81°42'E 61.2'
 4. S13°15'E 255.3'
 5. S52°49'E 93.1'
 6. N89°21'E 193.1'
 7. S84°09'W 228.7'
 8. S70°05'W 173.3'
 9. N69°52'W 127.4'
 10. NORTH ALONG SECTION LINE
 11. N0°59'43\"W 159.42'
 12. S89°00'17\"W 50'
 13. S0°39'43\"E 189.42'
 14. N89°00'17\"E 50'

CANCELLED NOS 901 903

SEE MAP 23 9 18

- PARCEL 1200
1. N8°15'W 402'
 2. N17°W 600'
 3. WEST 30'
 4. N19°30'W 212'
 5. N16°E 100'
 6. S24°E 100'
 7. S37°30'E 227'
 8. S2°E 90'
 9. S12°W 85'
 10. S70°W 186'
 11. S33°W 143'
 12. S36°W 72'

AM 2/15/15
JCV

4,043,000

23 10 13

708,000