

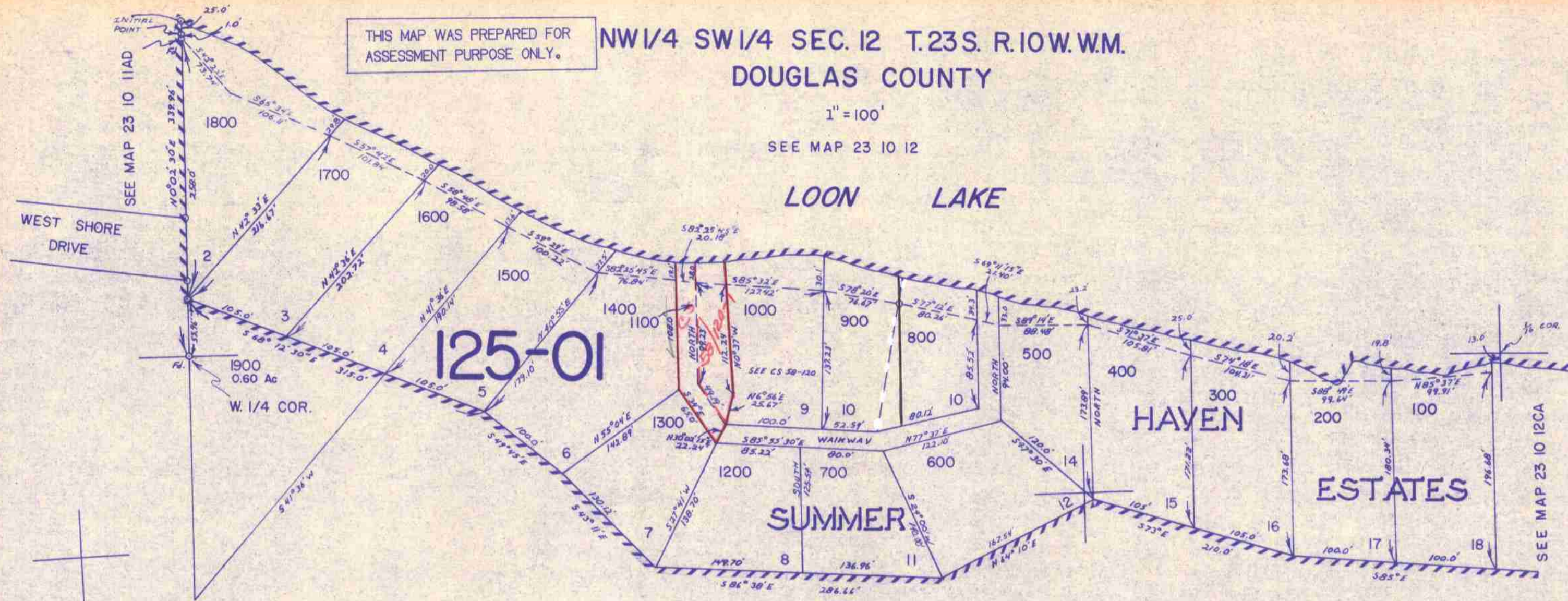
THIS MAP WAS PREPARED FOR
ASSESSMENT PURPOSE ONLY.

NW1/4 SW1/4 SEC. 12 T.23S. R.10W. WM.
DOUGLAS COUNTY

23 10 12CB

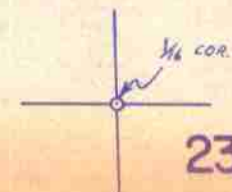
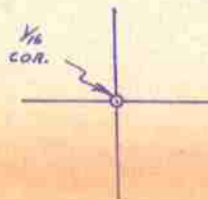
1" = 100'

SEE MAP 23 10 12



SEE MAP 23 10 12

116,000
714,000



23 10 12CB

4/10/20