

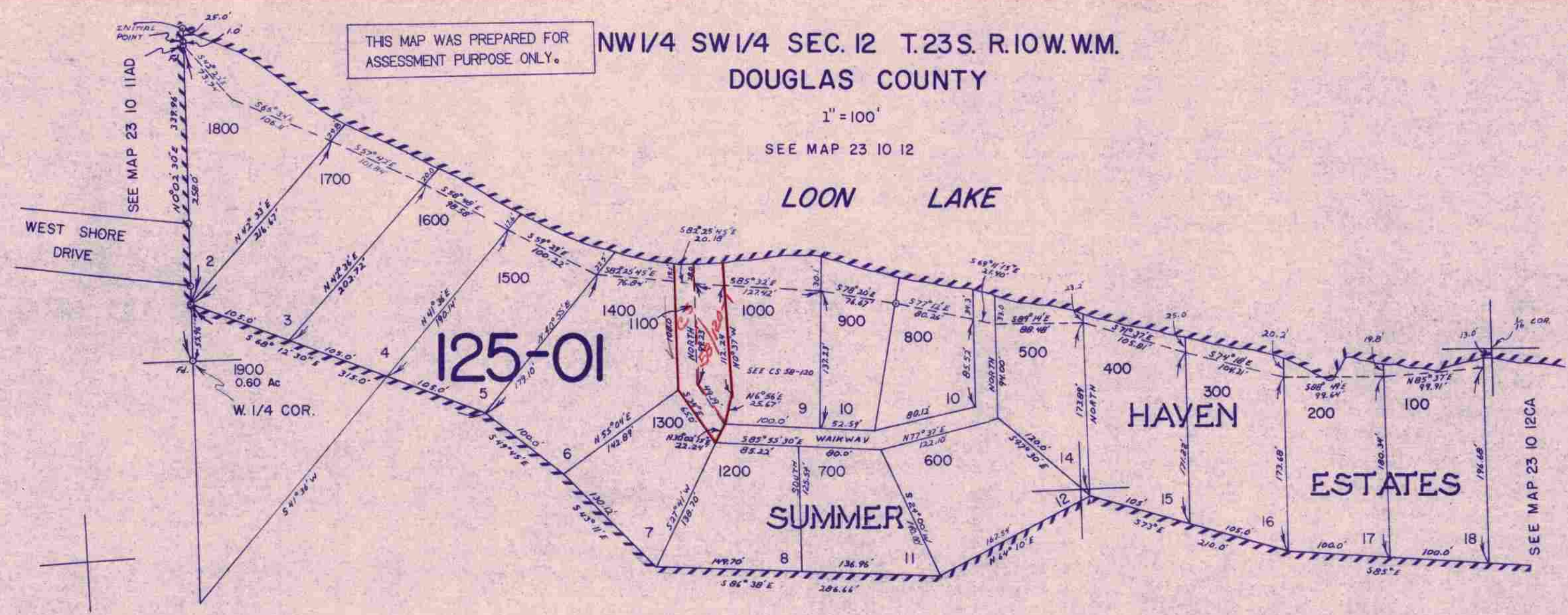
THIS MAP WAS PREPARED FOR ASSESSMENT PURPOSE ONLY.

NW1/4 SW1/4 SEC. 12 T.23S. R.10W.W.M.  
DOUGLAS COUNTY

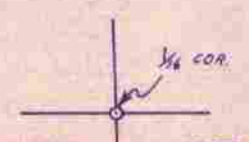
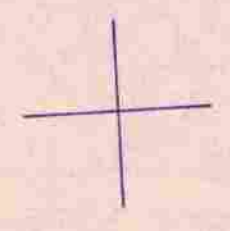
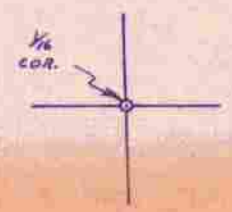
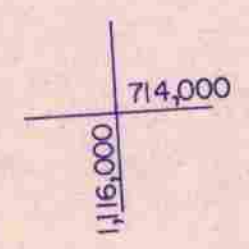
23 10 12CB

1" = 100'

SEE MAP 23 10 12



SEE MAP 23 10 12



23 10 12CB

1/8